

APP CRS <b>263°</b>	Rwy Ldg TDZE Apt Elev	<b>5001</b> <b>3689</b> <b>3706</b>
------------------------	-----------------------------	---

# RNAV (GPS) RWY 26

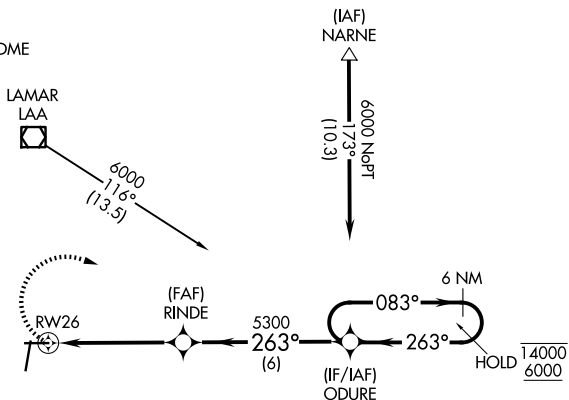
SOUTHEAST COLORADO RGNL (L.A.A)

RNP APCH.	MISSED APPROACH: Climbing right turn to 6000 direct ODURE and hold.
Rwy 26 helicopter visibility reduction below 3/4 SM NA.	

ASOS <b>135,625</b>	DENVER CENTER <b>133.4 377.175</b>	UNICOM <b>122.8 (CTAF) 0</b>
------------------------	---------------------------------------	---------------------------------

Procedure NA for arrival on LAA VOR/DME airway radials 048 CW 118.

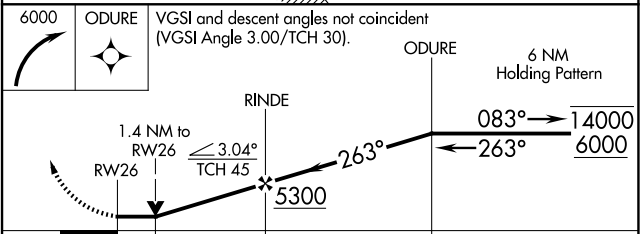
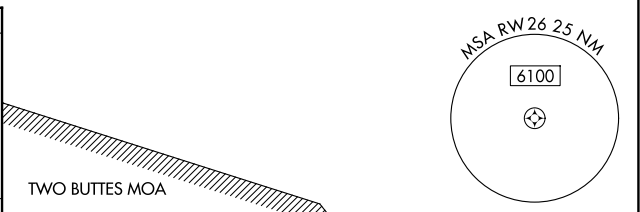
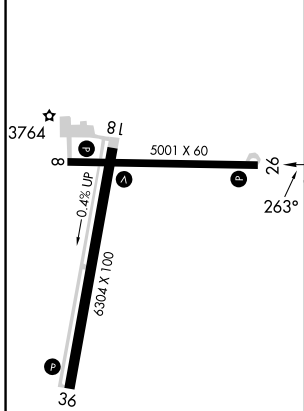
Procedure NA for arrivals at NARNE on V244 northeast bound.



SW-1, 11 JUN 2026 to 09 JUL 2026

SW-1, 11 JUN 2026 to 09 JUL 2026

ELEV 3706	TDZE 3689
-----------	-----------



REIL Rwy 8, 26, 18, and 36				
MIRL Rwy 8-26 and 18-36				
CATEGORY	A	B	C	D
LNAV MDA	4180-1	491 (500-1)	4180-1 3/8 491 (500-1 3/8)	4180-1 1/2 491 (500-1 1/2)