

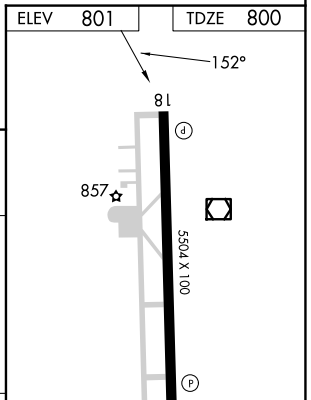
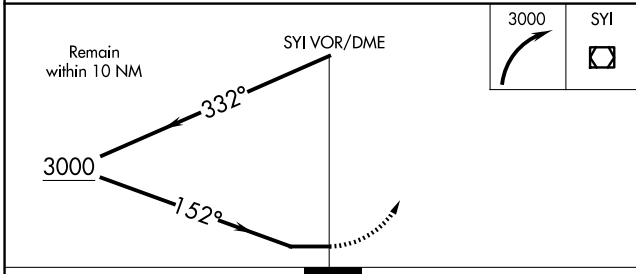
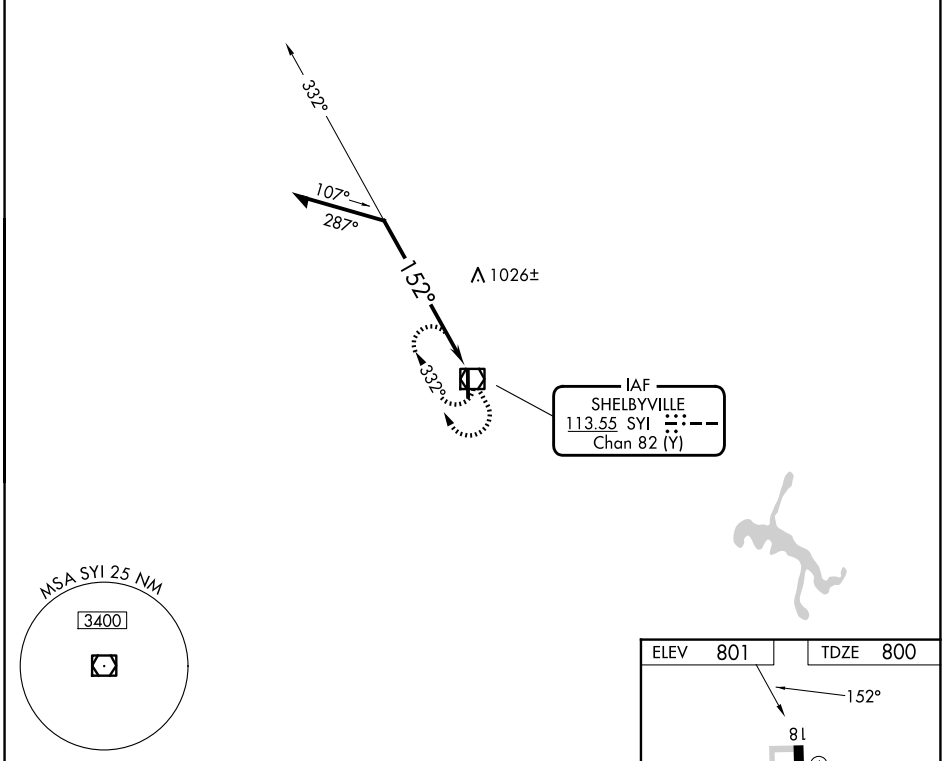
VOR/DME SYI <b>113.55</b> Chan <b>82</b> (Y)	APP CRS <b>152°</b>	Rwy Ldg <b>5504</b> TDZE <b>800</b> Apt Elev <b>801</b>
--	------------------------	---

**VOR RWY 18**  
BOMAR FLD/SHELBYVILLE MUNI (SYI)

**⚠** When local altimeter setting not received, use Tullahoma altimeter setting and increase all MDAs 80 feet and S-18 visibility Cat B/C/D ½ SM, and Circling visibility Cat B ¼ SM.

MISSED APPROACH: Climbing right turn to 3000 in SYI VOR/DME holding pattern.

AWOS-3 <b>119.275</b>	NASHVILLE APP CON <b>118.4 360.7</b>	UNICOM <b>122.8</b> (CTAF) <b>0</b>
--------------------------	---	--



CATEGORY	A	B	C	D
S-18	1500-1	700 (700-1)	1500-2	700 (700-2)
CIRCLING	1500-1	699 (700-1)	1780-3	979 (1000-3)

MIRL Rwy 18-36 **0**  
REIL Rwy 18 and 36

SE-1, 11 JUN 2026 to 09 JUL 2026

SE-1, 11 JUN 2026 to 09 JUL 2026