

WAAS CH <b>69509</b> <b>W27A</b>	APP CRS <b>275°</b>	Rwy Ldg <b>5108</b> TDZE <b>455</b> Apt Elev <b>461</b>
--	------------------------	---

# RNAV (GPS) RWY 27

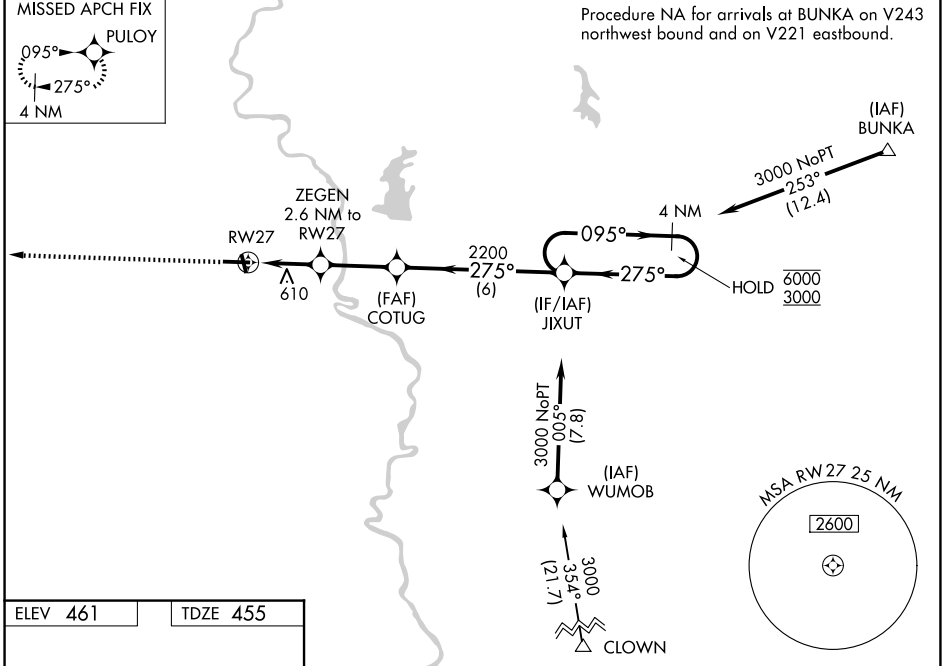
CRAWFORD COUNTY (RSV)

RNP APCH-GPS.

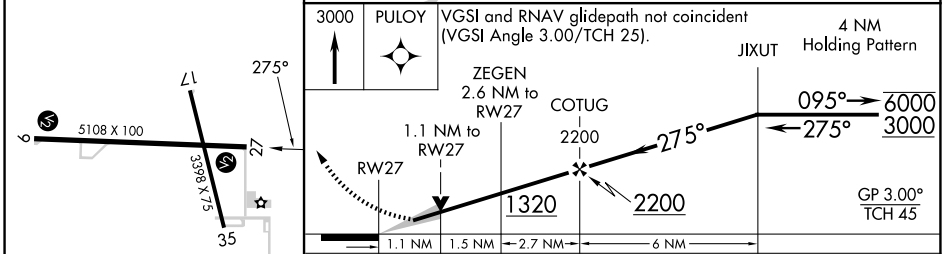
**⚠** For uncompensated Baro-VNAV systems, LNAV/VNAV NA below -15°C or above 54°C.

MISSED APPROACH: Climb to 3000 direct PULOY and hold.

AWOS-3 <b>120.50</b>	HULMAN APP CON <b>135.35 339.8</b>	UNICOM <b>123.0 (CTAF)</b>
-------------------------	---------------------------------------	-------------------------------



ELEV <b>461</b>	TDZE <b>455</b>
-----------------	-----------------



	CATEGORY	A	B	C	D
LPV	DA		705-1	250 (300-1)	
LNAV/VNAV	DA		845-1¼	390 (400-1¼)	
LNAV	MDA	840-1	385 (400-1)	840-1⅛	385 (400-1⅛)
CIRCLING		940-1 479 (500-1)	1080-1 619 (700-1)	1120-1¾ 659 (700-1¾)	1180-2¼ 719 (800-2¼)

EC-3, 11 JUN 2026 to 09 JUL 2026

EC-3, 11 JUN 2026 to 09 JUL 2026