

WAAS CH 56517 W12A	APP CRS 121°	Rwy Ldg TDZE Apt Elev	6001 1339 1339
--	------------------------	-----------------------------	---

RNAV (GPS) RWY 12

SPENCER MUNI (SPW)

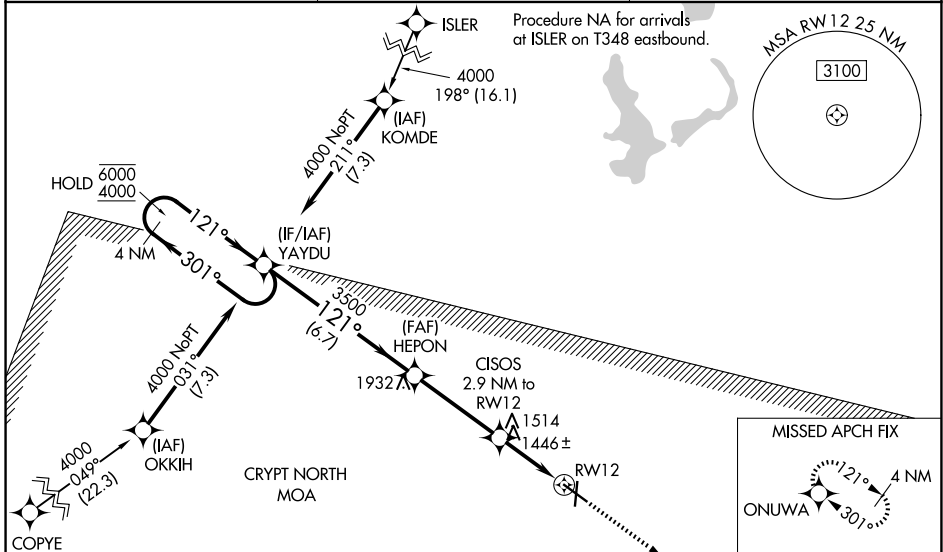
RNP APCH-GPS.

⚠ Baro-VNAV and VDP NA when using Estherville altimeter setting. For uncompensated Baro-VNAV systems, LNAV/VNAV NA below -21°C or above 54°C. When local altimeter setting not received, use Estherville altimeter setting: increase LPV DA to 1599 feet, LNAV/VNAV DA to 1650 feet; increase all MDAs 60 feet, and visibility LNAV Cat C/D 1/8 SM, and Circling Cat C/D 1/4 SM. For inop ALS when using Estherville altimeter setting, increase LNAV/VNAV all Cats visibility to 7/8 SM and LNAV Cats C/D to 1 SM. For inop ALS, increase LNAV/VNAV all Cats visibility to 3/4 SM and LNAV Cat C/D to 1 SM.

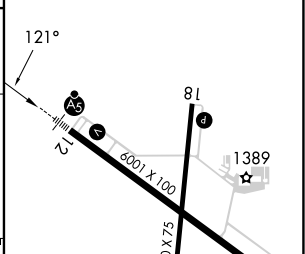
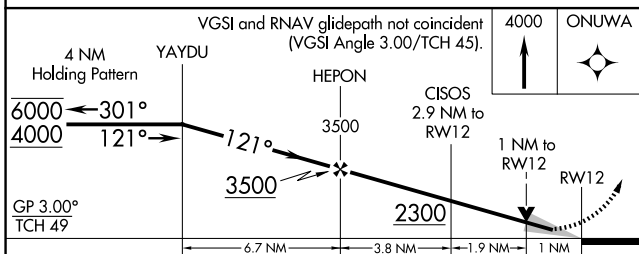
MALSRL
AS

MISSED APPROACH: Climb to 4000 direct ONUWA and hold.

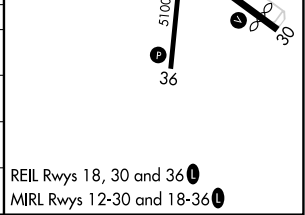
ASOS 126.625	MINNEAPOLIS CENTER 127.75 257.7	UNICOM 123.0 (CTAF) ⓪
------------------------	---	--



ELEV 1339	TDZE 1339
-----------	-----------



CATEGORY	A	B	C	D
LPV DA		1539-1/2	200 (200-1/2)	
LNAV/VNAV DA		1590-1/2	251 (300-1/2)	
LNAV MDA	1700-1/2	361 (400-1/2)	1700-5/8	361 (400-5/8)
CIRCLING	1760-1 421 (500-1)	1800-1 461 (500-1)	2100-2 1/4 761 (800-2 1/4)	2100-2 1/2 761 (800-2 1/2)



NC-3, 11 JUN 2026 to 09 JUL 2026

NC-3, 11 JUN 2026 to 09 JUL 2026