

WAAS CH 61333 W18A	APP CRS 181°	Rwy Ldg TDZE 1338 Apt Elev 1339
--	------------------------	---

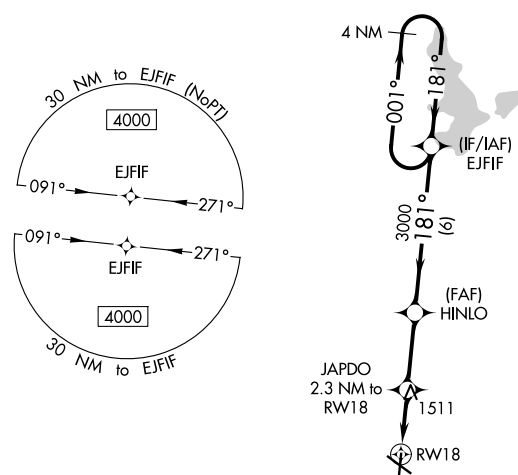
RNAV (GPS) RWY 18

SPENCER MUNI (SPW)

⚠ Baro-VNAV and VDP NA when using Estherville altimeter setting. For uncompensated Baro-VNAV systems, LNAV/VNAV NA below -20°C (-4°F) or above 54°C (130°F). DME/DME RNP-0.3 NA. When local altimeter setting not received, use Estherville altimeter setting and increase all DA/MDA 60 feet; increase LNAV/VNAV all Cats visibility to 1 1/8 mile.

MISSED APPROACH:
Climb to 4000 direct ICOSU and hold.

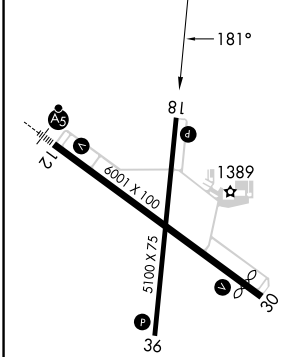
ASOS 126.625	MINNEAPOLIS CENTER 127.75 257.7	UNICOM 123.0 (CTAF) ①
------------------------	---	---------------------------------



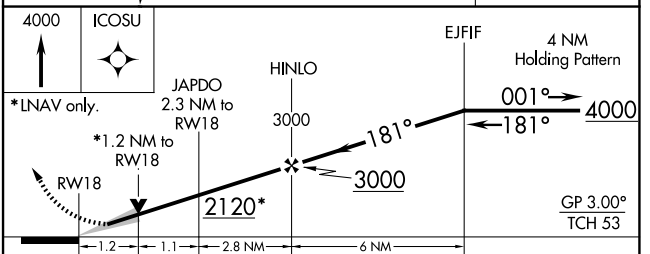
NC-3, 11 JUN 2026 to 09 JUL 2026

NC-3, 11 JUN 2026 to 09 JUL 2026

ELEV 1339	TDZE 1338
-----------	-----------



REIL Rwy 18, 30 and 36 ①
MIRL Rwy 12-30 and 18-36 ①



CATEGORY	A	B	C	D
LPV DA	1588-1	250 (300-1)		NA
LNAV/VNAV DA	1608-1	270 (300-1)		NA
LNAV MDA	1780-1	442 (500-1)		NA
CIRCLING	1780-1 441 (500-1)	1820-1 481 (500-1)		NA