

VORTAC FNT 116.9 Chan 116	APP CRS 281°	Rwy Ldg 4300 TDZE 736 Apt Elev 736
---	------------------------	---

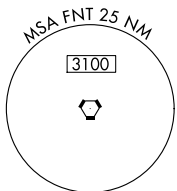
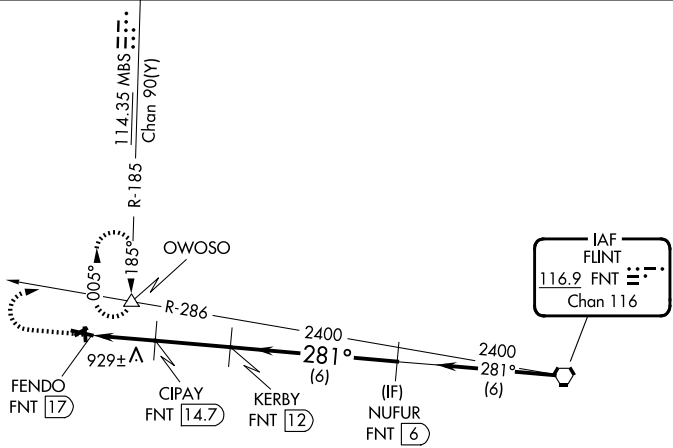
VOR/DME RWY 29

OWOSSO COMMUNITY (RNP)

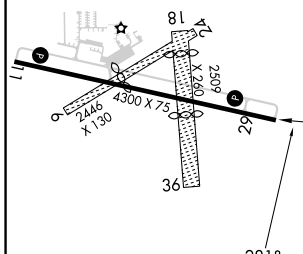
▼ Circling NA to Rwy 6, 18, 24 and 36. Rwy 29 helicopter visibility reduction below $\frac{3}{4}$ SM NA. When local altimeter setting not received, use Flint altimeter setting and increase all MDA 60 feet and S-29 Cat C visibility $\frac{1}{4}$ mile.

MISSED APPROACH: Climb to 1900 then climbing right turn to 2700 via FNT VORTAC R-286 to OWOSSO INT and hold.

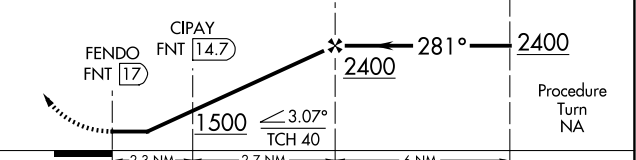
AWOS-3P 118.025	GREAT LAKES APP CON * 128.55 257.9	UNICOM 123.0 (CTAF) 0
---------------------------	--	--



ELEV 736	TDZE 736
-----------------	-----------------



1900	2700	OWOSSO	VGSI and descent angles not coincident (VGSI Angle 3.00/TCH 40).
↑	FNT R-286	△	



CATEGORY	A	B	C	D
S-29	1180-1	444 (500-1)	1180-1 $\frac{1}{4}$ 444 (500-1 $\frac{1}{4}$)	NA
CIRCLING	1220-1 483 (500-1)	1260-1 523 (600-1)	1400-1 $\frac{3}{4}$ 663 (700-1 $\frac{3}{4}$)	NA

REIL Rwy 11 and 29 **0**
MIRL Rwy 11-29 **0**

EC-1, 11 JUN 2026 to 09 JUL 2026

EC-1, 11 JUN 2026 to 09 JUL 2026