

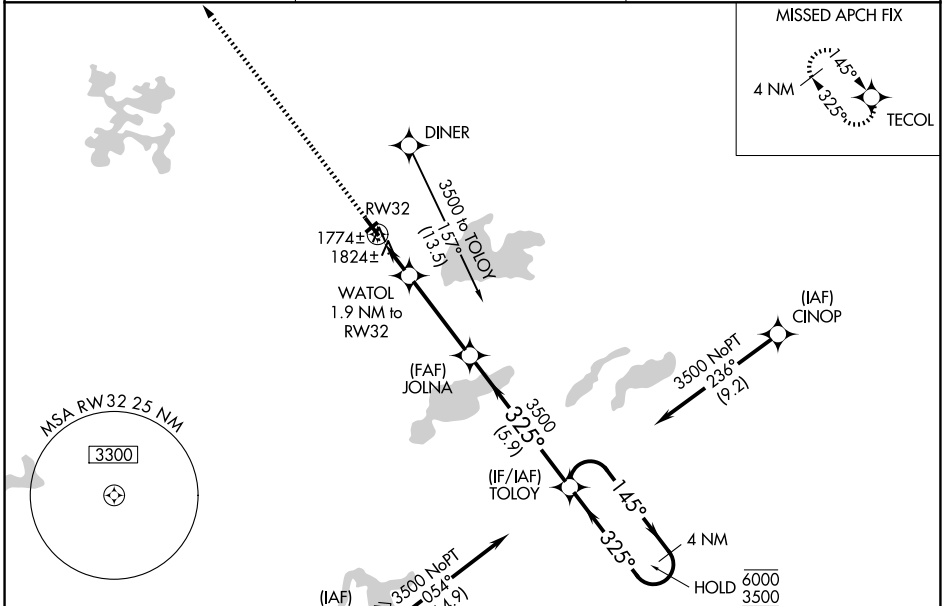
WAAS CH 97744 W32A	APP CRS 325°	Rwy Ldg TDZE Apt Elev	3601 1705 1706
--	------------------------	-----------------------------	---

RNAV (GPS) RWY 32

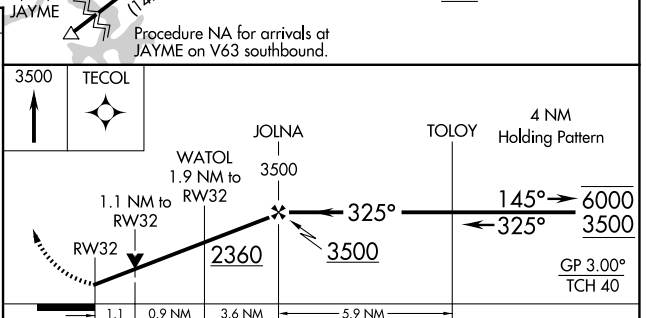
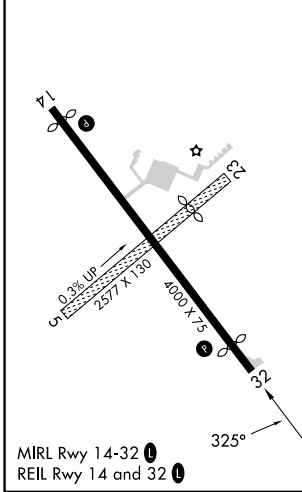
KINGS LAND O' LAKES (LNL)

RNP APCH - GPS.	MISSED APPROACH: Climb to 3500 direct TECOL and hold.
-----------------	---

AWOS-3 119.525	MINNEAPOLIS CENTER 133.65 281.5	UNICOM 122.8 (CTAF) 0
--------------------------	---	---------------------------------



ELEV 1706	TDZE 1705
-----------	-----------



CATEGORY	A	B	C	D
LPV DA	1955-1	250 (300-1)		NA
LNAV/ LNAV DA	1974-1	269 (300-1)		NA
LNAV MDA	2080-1	375 (400-1)		NA
CIRCLING	2200-1 494 (500-1)	2240-1 534 (600-1)	2240-1½ 534 (600-1½)	NA

EC-3, 11 JUN 2026 to 09 JUL 2026

EC-3, 11 JUN 2026 to 09 JUL 2026