

**TOP ALTITUDE:
ASSIGNED BY ATC**

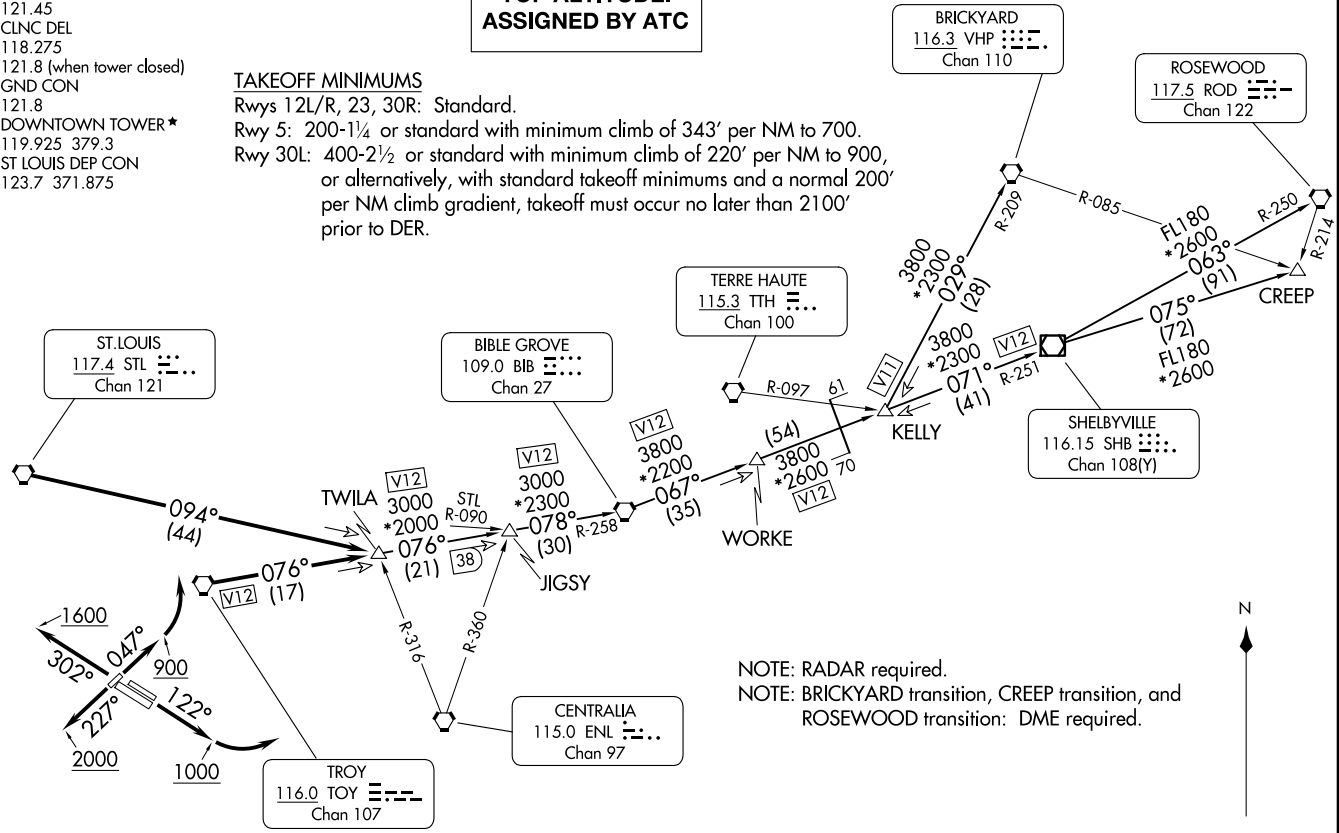
ATIS
121.45
CLNC DEL
118.275
121.8 (when tower closed)
GND CON
121.8
DOWNTOWN TOWER *
119.925 379.3
ST LOUIS DEP CON
123.7 371.875

TAKEOFF MINIMUMS

Rwys 12L/R, 23, 30R: Standard.
Rwy 5: 200-1¼ or standard with minimum climb of 343' per NM to 700.
Rwy 30L: 400-2½ or standard with minimum climb of 220' per NM to 900,
or alternatively, with standard takeoff minimums and a normal 200'
per NM climb gradient, takeoff must occur no later than 2100'
prior to DER.

GATEWAY ONE DEPARTURE
(GATWY1.TWILA) 08NOV18

CAHOKIA/ST. LOUIS, ILLINOIS
ST LOUIS DOWNTOWN (TPS)



NOTE: RADAR required.
NOTE: BRICKYARD transition, CREEP transition, and
ROSEWOOD transition: DME required.



NOTE: Chart not to scale.

(CONTINUED ON FOLLOWING PAGE)

GATEWAY ONE DEPARTURE
(GATWY1.TWILA) 24025

AL-5316 (FAA)

ST LOUIS DOWNTOWN (TPS)
CAHOKIA/ST. LOUIS, ILLINOIS



DEPARTURE ROUTE DESCRIPTION

TAKEOFF RUNWAY 5: Climb heading 047° to 900 before turning left, then climb and maintain 2500 or assigned altitude. Expect vector to appropriate route, thence. . . .

TAKEOFF RUNWAYS 12L/R: Climb heading 122° to 1000 before turning left, then climb and maintain 2500 or assigned altitude. Expect vector to appropriate route, thence. . . .

TAKEOFF RUNWAY 23: Climb heading 227° to 2000 before turning, then climb and maintain 2500 or assigned altitude. Expect vector to appropriate route, thence. . . .

TAKEOFF RUNWAYS 30L/R: Climb heading 302° to 1600 before turning, then climb and maintain 2500 or assigned altitude. Expect vector to appropriate route, thence. . . .

. . . .from over TOY VORTAC on TOY R-076 or over STL VORTAC on STL R-094 to TWILA INT. Then on (transition), expect clearance to filed altitude 10 minutes after departure.

BIBLE GROVE TRANSITION (GATWY1.BIB): From over TWILA on TOY R-076 to JIGSY, then on BIB R-258 to BIB VORTAC.

BRICKYARD TRANSITION (GATWY1.VHP): From over TWILA on TOY R-076 to JIGSY, then on BIB R-258 to BIB VORTAC, then on BIB R-067 to WORKE, then on BIB R-067 and SHB R-251 to KELLY, then on VHP R-209 to VHP VORTAC.

CREEP TRANSITION (GATWY1.CREEP): From over TWILA on TOY R-076 to JIGSY, then on BIB R-258 to BIB VORTAC, then on BIB R-067 to WORKE, then on BIB R-067 and SHB R-251 to KELLY, then on SHB R-251 to SHB VOR/DME, then on SHB R-075 to CREEP.

JIGSY TRANSITION (GATWY1.JIGSY): From over TWILA on TOY R-076 to JIGSY.

ROSEWOOD TRANSITION (GATWY1.ROD): From over TWILA on TOY R-076 to JIGSY, then on BIB R-258 to BIB VORTAC, then on BIB R-067 to WORKE, then on BIB R-067 and SHB R-251 to KELLY, then on SHB R-251 to SHB VOR/DME, then on SHB R-063 and ROD R-250 to ROD VORTAC.

EC-3, 11 JUN 2026 to 09 JUL 2026

EC-3, 11 JUN 2026 to 09 JUL 2026