

BUCHANAN TWO DEPARTURE

AL-5320 (FAA)

BUCHANAN FLD (CCR)
CONCORD, CALIFORNIA

**TOP ALTITUDE:
ASSIGNED BY ATC**

GND CON
121.9
CONCORD TOWER *
119.7 (CTAF) 257.8
TRAVIS DEP CON
119.9 322.325

SACRAMENTO
115.2 SAC
Chan 99

SCAGGS ISLAND
112.1 SGD
Chan 58

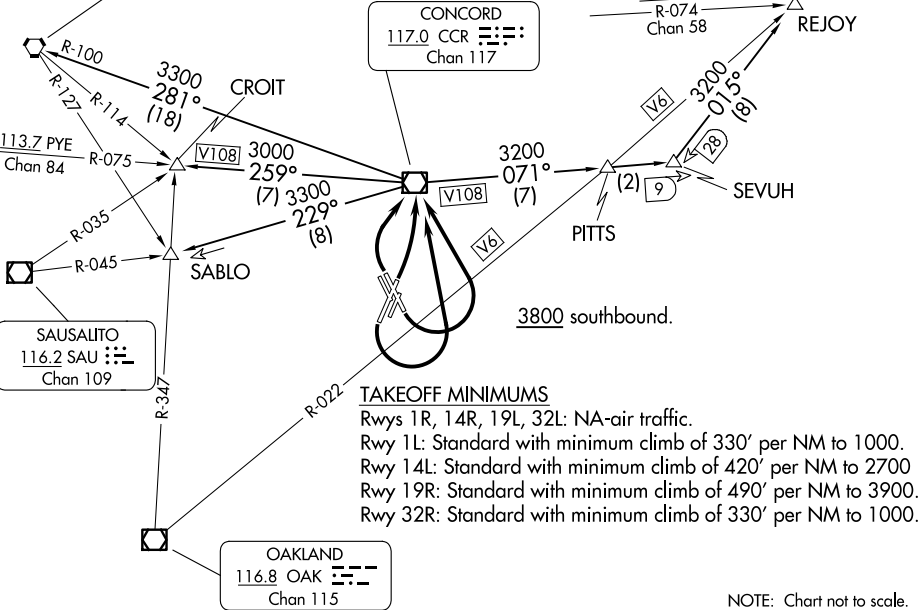
CONCORD
117.0 CCR
Chan 117

112.1 SGD
R-074
Chan 58

113.7 PYE
Chan 84

SAUSALITO
116.2 SAU
Chan 109

OAKLAND
116.8 OAK
Chan 115



TAKEOFF MINIMUMS
 Rwy 1R, 14R, 19L, 32L: NA-air traffic.
 Rwy 1L: Standard with minimum climb of 330' per NM to 1000.
 Rwy 14L: Standard with minimum climb of 420' per NM to 2700
 Rwy 19R: Standard with minimum climb of 490' per NM to 3900.
 Rwy 32R: Standard with minimum climb of 330' per NM to 1000.

NOTE: Chart not to scale.

DEPARTURE ROUTE DESCRIPTION

TAKEOFF RUNWAYS 1L, 14L, 19R: Climbing left turn direct CCR VOR/DME, thence. . . .
TAKEOFF RUNWAY 32R: Climbing right turn direct CCR VOR/DME, thence. . . .
 . . . on (transition) or (assigned route).

CROIT TRANSITION (BCHN2.CROIT): From over CCR VOR/DME on CCR R-259 to CROIT INT.

PITTS TRANSITION (BCHN2.PITTS): From over CCR VOR/DME on CCR R-071 to PITTS INT.

REJOY TRANSITION (BCHN2.REJOY): From over CCR VOR/DME on CCR R-071 and SAC R-195 to REJOY INT.

SABLO TRANSITION (BCHN2.SABLO): From over CCR VOR/DME on CCR R-229 to SABLO INT.

SCAGGS ISLAND TRANSITION (BCHN2.SGD): From over CCR VOR/DME on CCR R-281 and SGD R-100 to SGD VORTAC.

SW-2, 11 JUN 2026 to 09 JUL 2026

SW-2, 11 JUN 2026 to 09 JUL 2026