

WAAS CH <b>56239</b> <b>W34B</b>	APP CRS <b>326°</b>	Rwy Ldg <b>3715</b> TDZE <b>182</b> Apt Elev <b>192</b>
--	------------------------	---

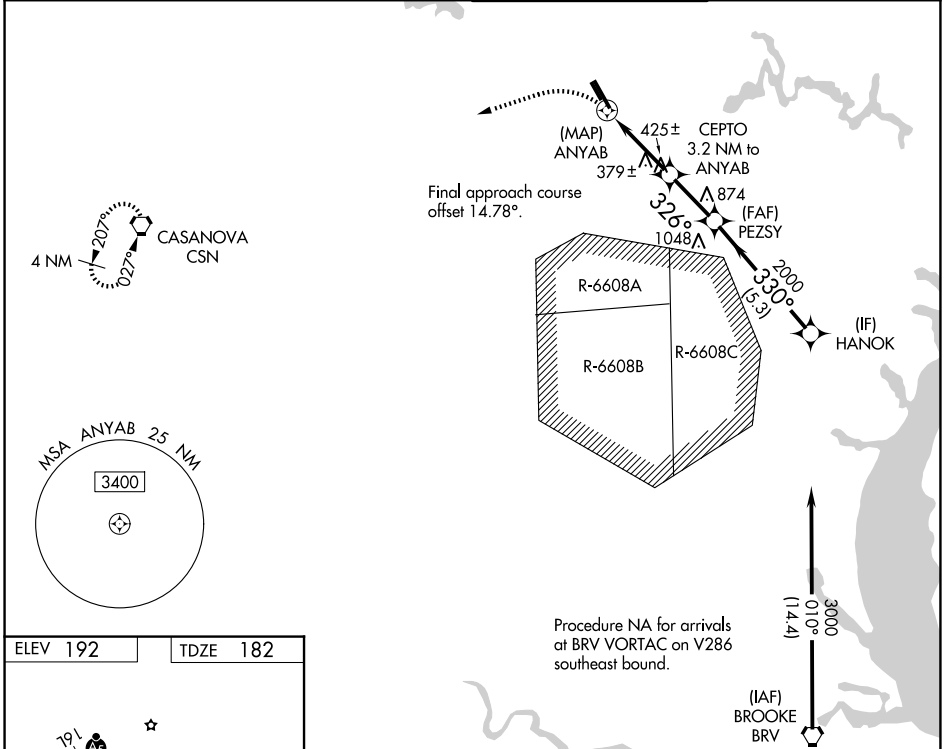
# RNAV (GPS) RWY 34L

MANASSAS RGNL/HARRY P DAVIS FLD (HEF)

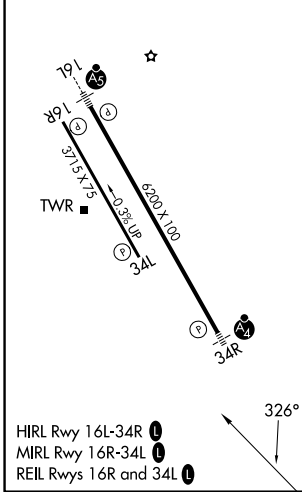
**⚠** DME/DME RNP-0.3 NA. When local altimeter setting not received, use Washington Dulles Intl altimeter setting and increase all MDA 60 feet; increase LNAV Cat C/D and Circling Cat C and D visibility ¼ mile. Helicopter visibility reduction below ¾ SM NA.

**MISSED APPROACH:**  
Climbing left turn to 3000 direct CSN VORTAC and hold.

ATIS <b>125.175</b>	POTOMAC APP CON <b>128.525 306.925</b>	MANASSAS TOWER ★ <b>133.1 (CTAF) 0 360.75</b>	GND CON <b>121.8</b>
------------------------	---	--	-------------------------



ELEV 192	TDZE 182
----------	----------



3000	CSN	VGSI and descent angles not coincident (VGSI Angle 3.00/TCH 43).	HANOK	
0.9 NM to ANYAB	CEPTO 3.2 NM to ANYAB	PEZSY	3000	
1260	2.79°	TCH 40	2000	
0.4	0.9	2.4 NM	2.3 NM	
5.3 NM				
CATEGORY	A	B	C	D
LP MDA	640-1	458 (500-1)	640-1¾	458 (500-1¾)
LNAV MDA	680-1	498 (500-1)	680-1¾	498 (500-1¾)
CIRCLING	720-1 528 (600-1)	740-1 548 (600-1)	840-1¾ 648 (700-1¾)	880-2¼ 688 (700-2¼)

NE-3, 11 JUN 2026 to 09 JUL 2026

NE-3, 11 JUN 2026 to 09 JUL 2026