

LOC I-UV D <b>111.7</b>	APP CRS <b>092°</b>	Rwy Ldg TDZE Apt Elev	<b>5600</b> <b>418</b> <b>452</b>
----------------------------	------------------------	-----------------------------	---

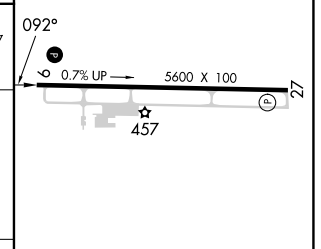
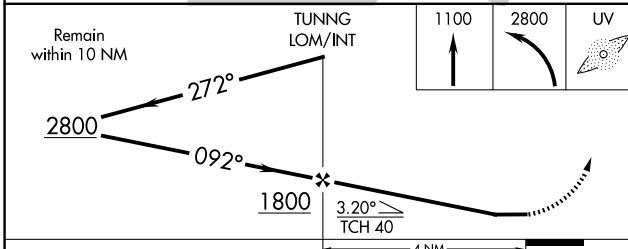
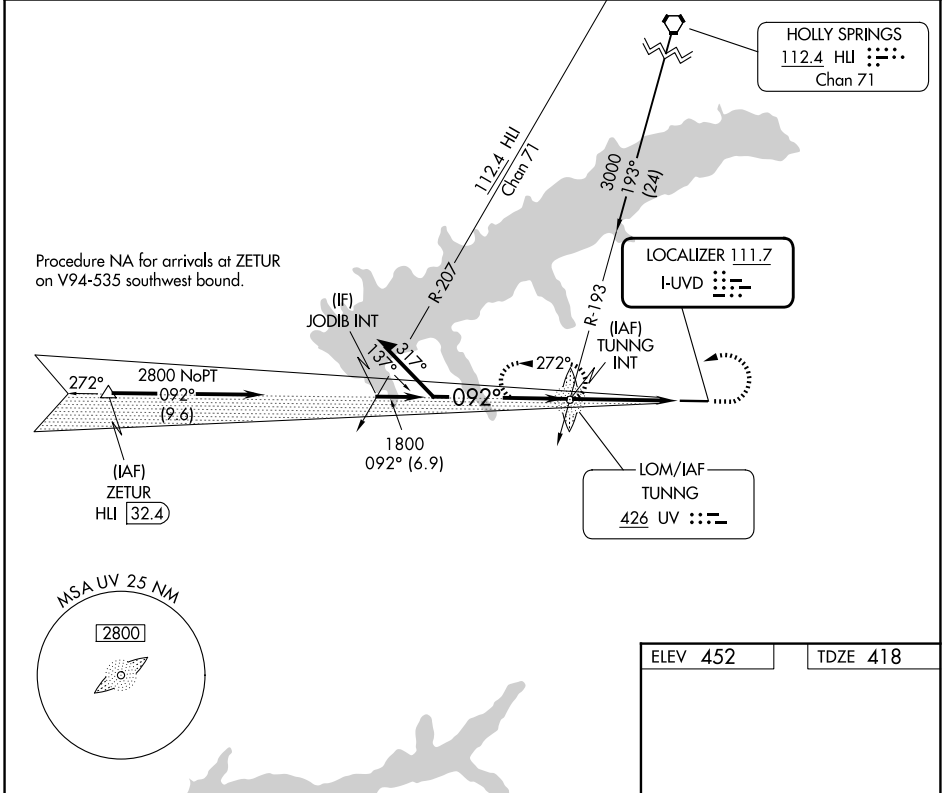
# LOC Z RWY 9

UNIVERSITY-OXFORD (UOX)

**NA** ADF required. When local altimeter setting not received, use Olive Branch altimeter setting and increase all MDA 100 feet; increase S-LOC Cats C, D visibility  $\frac{3}{8}$  mile and Circling Cat C visibility  $\frac{1}{4}$  mile.

**MISSED APPROACH:** Climb to 1100 then climbing left turn to 2800 direct TUNNG LOM/INT and hold, continue climb-in-hold to 2800.

AWOS-3PT <b>132.725</b>	MEMPHIS CENTER <b>128.5 279.55</b>	GCO <b>135.075</b>	UNICOM <b>123.0 (CTAF)</b>
----------------------------	---------------------------------------	-----------------------	-------------------------------



CATEGORY	A	B	C	D
S-LOC 9	920-1	502 (500-1)	920-1 $\frac{3}{8}$	502 (500-1 $\frac{3}{8}$ )
CIRCLING	980-1 528 (600-1)	1060-1 608 (700-1)	1380-2 $\frac{3}{4}$ 928 (1000-2 $\frac{3}{4}$ )	1380-3 928 (1000-3)

MIRL Rwy 9-27  
REIL Rwys 9 and 27

FAF to MAP 4 NM

Knots	60	90	120	150	180
Min:Sec	4:00	2:40	2:00	1:36	1:20

SC-4, 11 JUN 2026 to 09 JUL 2026

SC-4, 11 JUN 2026 to 09 JUL 2026