

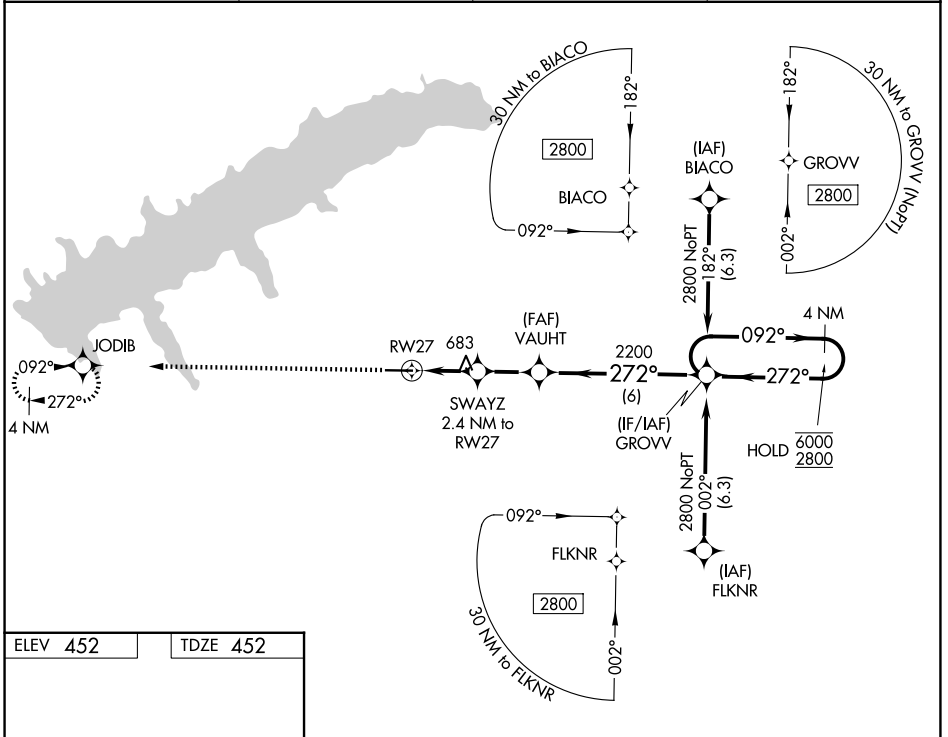
WAAS CH <b>63235</b> <b>W27A</b>	APP CRS <b>272°</b>	Rwy Ldg TDZE Apt Elev	<b>5600</b> <b>452</b> <b>452</b>
--	------------------------	-----------------------------	---

# RNAV (GPS) RWY 27

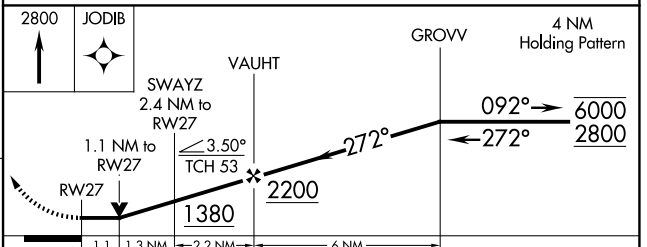
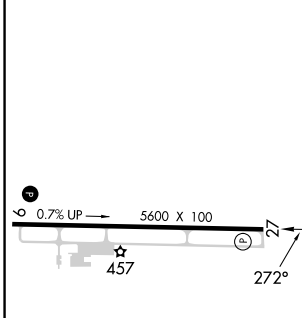
UNIVERSITY-OXFORD (UOX)

RNP APCH - GPS.		MISSED APPROACH: Climb to 2800 direct JODIB and hold.	
Rwy 27 helicopter visibility reduction below 3/4 SM NA.			

AWOS-3PT <b>132.725</b>	MEMPHIS CENTER <b>128.5 279.55</b>	GCO <b>135.075</b>	UNICOM <b>123.0 (CTAF) 0</b>
----------------------------	---------------------------------------	-----------------------	---------------------------------



ELEV <b>452</b>	TDZE <b>452</b>
-----------------	-----------------



CATEGORY	A	B	C	D
LP MDA	940-1	488 (500-1)	940-1 <sup>3</sup> / <sub>8</sub>	488 (500-1 <sup>3</sup> / <sub>8</sub> )
LNAV MDA	940-1	488 (500-1)	940-1 <sup>3</sup> / <sub>8</sub>	488 (500-1 <sup>3</sup> / <sub>8</sub> )
CIRCLING	980-1 528 (600-1)	1060-1 608 (700-1)	1380-2 <sup>1</sup> / <sub>2</sub> 928 (1000-2 <sup>1</sup> / <sub>2</sub> )	1380-2 <sup>3</sup> / <sub>4</sub> 928 (1000-2 <sup>3</sup> / <sub>4</sub> )

MIRL Rwy 9-27   
REIL Rwy 9 and 27

SC-4, 11 JUN 2026 to 09 JUL 2026

SC-4, 11 JUN 2026 to 09 JUL 2026