

VOR/DME MAZ <b>110.6</b> Chan <b>43</b>	APP CRS <b>081°</b>	Rwy Ldg <b>4699</b> TDZE <b>28</b> Apt Elev <b>28</b>
---	------------------------	---

# VOR RWY 9

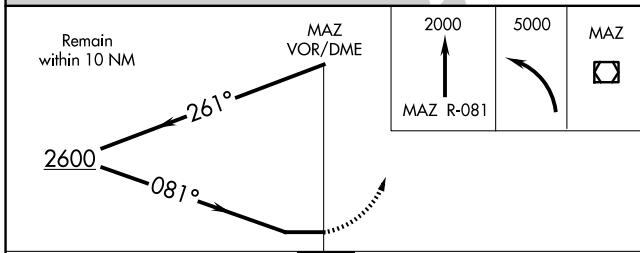
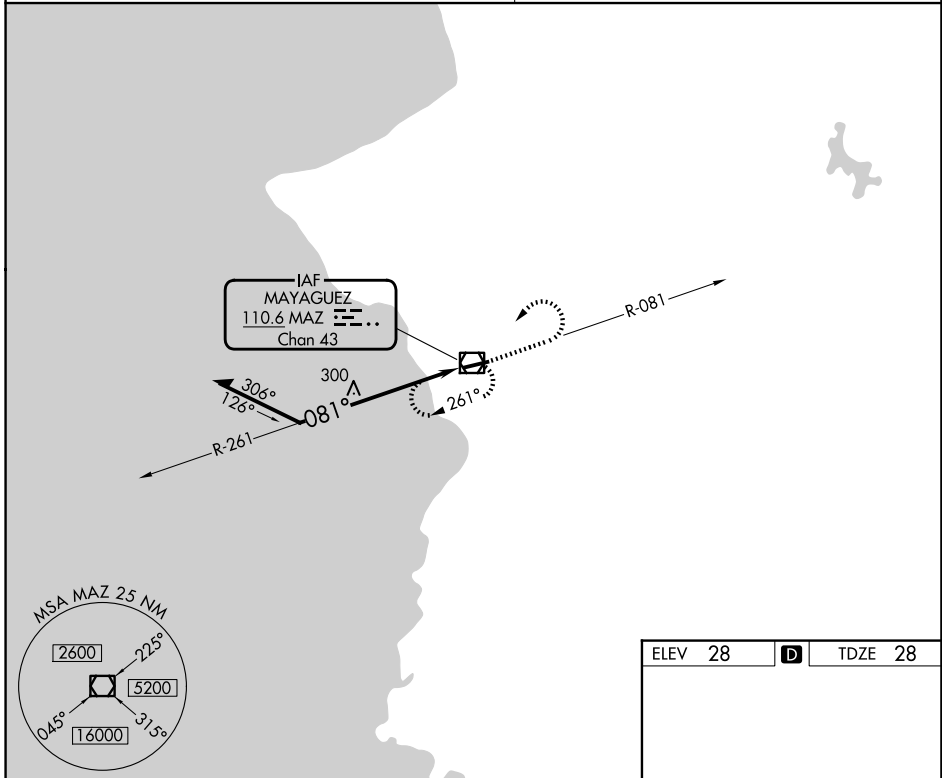
EUGENIO MARIA DE HOSTOS (MAZ)(TJMZ)

**⚠** Circling to Rwy 27 NA at night. When VGSI inoperative, procedure NA at night. Visibility reduction by helicopters NA. When Class E surface area not in effect, except for operators with approved weather reporting service, procedure NA.

**MISSED APPROACH:** Climb to 2000 on MAZ VOR/DME R-081 then climbing left turn to 5000 direct MAZ VOR/DME and hold, continue climb-in-hold to 5000.

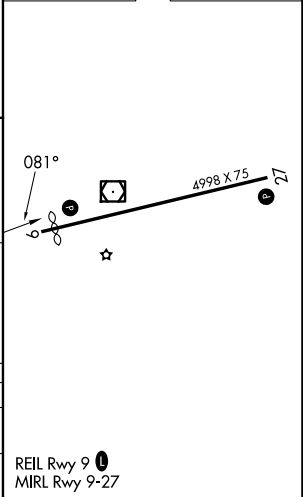
SAN JUAN CERAP APP CON  
**118.75 269.0**

UNICOM  
**122.8 (CTAF) 0**



ELEV 28	<b>D</b>	TDZE 28
---------	----------	---------

CATEGORY	A	B	C	D
S-9	1100-1¼ 1072 (1100-1¼)	1100-1½ 1072 (1100-1½)	1100-3 1072 (1100-3)	NA
CIRCLING	1100-1¼ 1072 (1100-1¼)	1100-1½ 1072 (1100-1½)	1460-3 1432 (1500-3)	NA



# VOR RWY 9

SE-3, 11 JUN 2026 to 09 JUL 2026

SE-3, 11 JUN 2026 to 09 JUL 2026