

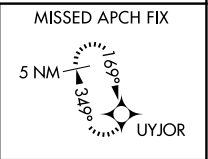
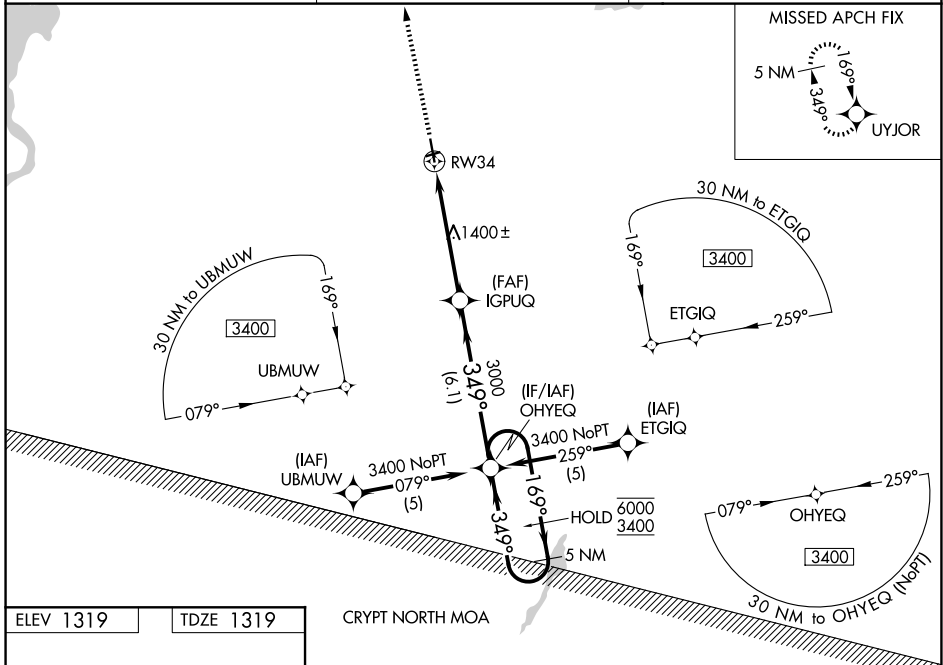
|  |                        |   |
|--|------------------------|---|
| WAAS<br>CH <b>82304</b><br><b>W34A</b> | APP CRS<br><b>349°</b> | Rwy Ldg <b>4797</b><br>TDZE <b>1319</b><br>Apt Elev <b>1319</b> |
|--|------------------------|---|

# RNAV (GPS) RWY 34

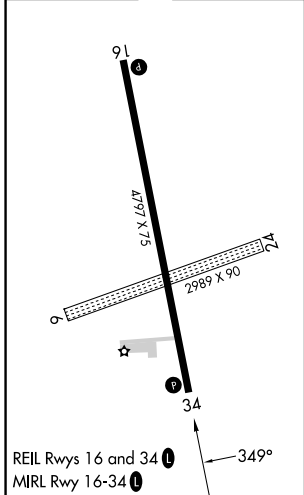
ESTHERVILLE MUNI (EST)

|           |  |   |
|-----------|--|---|
| RNP APCH. | <p><b>⚠</b> Circling NA to Rwy 6 and 24. Baro-VNAV and VDP NA when using Jackson altimeter setting. For uncompensated Baro-VNAV systems, LNAV/VNAV NA below -17°C or above 54°C. When local altimeter not received, use Jackson altimeter setting and increase all DA/MDA 60 feet.</p> | MISSED APPROACH: Climb to 3400 direct UYJOR and hold. |
|-----------|--|---|

|                        |   |                                 |
|------------------------|---|---------------------------------|
| ASOS<br><b>121.425</b> | MINNEAPOLIS CENTER<br><b>127.75 257.7</b> | UNICOM<br><b>122.975 (CTAF)</b> |
|------------------------|---|---------------------------------|

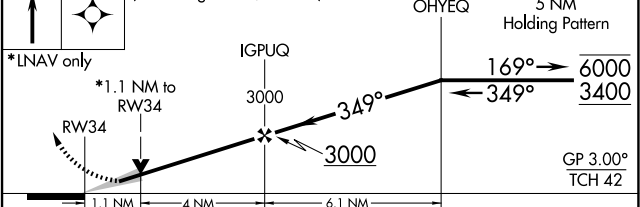


|           |           |
|-----------|-----------|
| ELEV 1319 | TDZE 1319 |
|-----------|-----------|



CRYPT NORTH MOA

3400 UYJOR VGS and RNAV glidepath not coincident (VGS Angle 3.00/TCH 39).



| CATEGORY     | A                     | B                     | C | D  |
|--------------|-----------------------|-----------------------|---|----|
| LPV DA       | 1569-1                | 250 (300-1)           |   | NA |
| LNAV/VNAV DA | 1629-1                | 310 (400-1)           |   | NA |
| LNAV MDA     | 1700-1                | 381 (400-1)           |   | NA |
| CIRCLING     | 1720-1<br>401 (500-1) | 1840-1<br>521 (600-1) |   | NA |

NC-3, 11 JUN 2026 to 09 JUL 2026

NC-3, 11 JUN 2026 to 09 JUL 2026