

WAAS CH 56400 W27A	APP CRS 273°	Rwy Ldg TDZE Apt Elev	6000 8 10
--	------------------------	-----------------------------	--------------------------------------

RNAV (GPS) RWY 27L

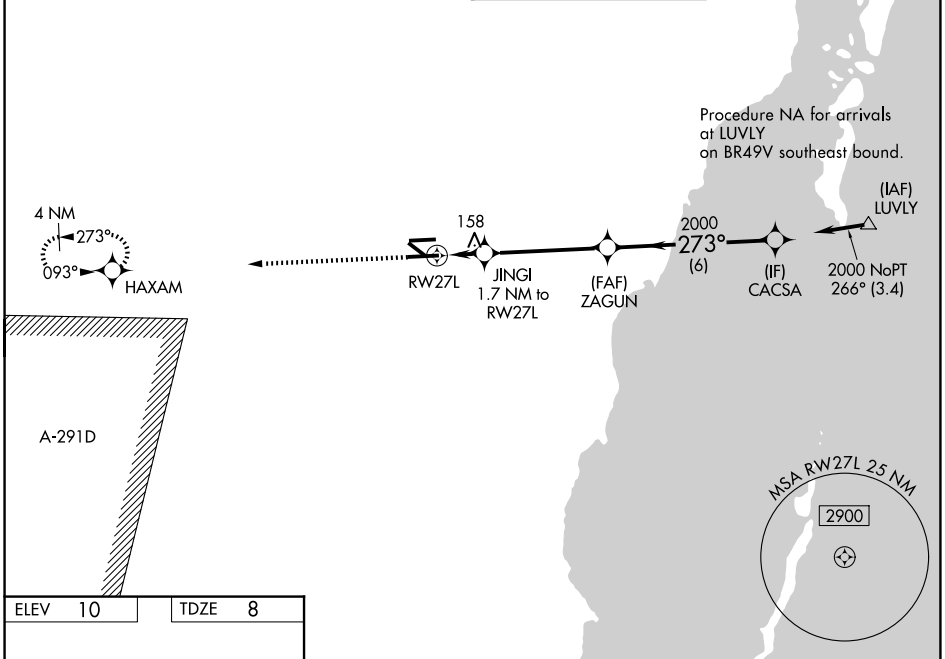
MIAMI EXEC (TMB)

RNP APCH.

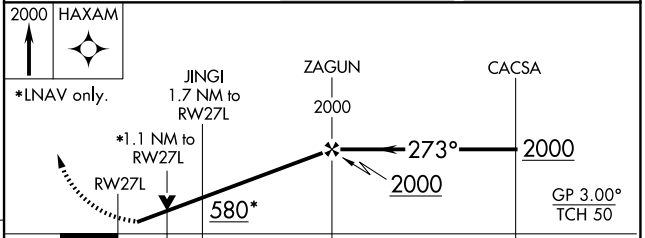
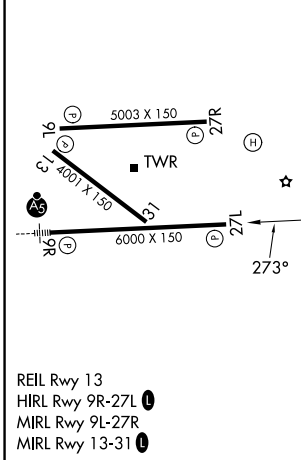
⚠ Circling Rwy 13, 31 NA at night. Rwy 27L helicopter visibility reduction below $\frac{3}{4}$ SM NA. For uncompensated Baro-VNAV systems, LNAV/VNAV NA below -1.5°C or above 43°C . VDP and Baro-VNAV NA when using Miami Intl altimeter setting. When local altimeter setting not received, use Miami Intl altimeter setting and increase LPV DA to 235 feet, LNAV/VNAV DA to 368 feet and all MDA 40 feet, increase LNAV Cats C/D visibility $\frac{1}{4}$ SM.

⚠ MISSED APPROACH: Climb to 2000 direct HAXAM and hold.

ATIS 124.0	MIAMI APP CON 125.5 354.1	MIAMI EXEC TOWER * 118.9 (CTAF) 0	GND CON 121.7
----------------------	-------------------------------------	--	-------------------------



ELEV 10	TDZE 8
---------	--------



CATEGORY	A	B	C	D
LPV DA		208- $\frac{3}{4}$	200 (200- $\frac{3}{4}$)	
LNAV/VNAV DA		341-1 $\frac{1}{8}$	333 (400-1 $\frac{1}{8}$)	
LNAV MDA	420-1	412 (500-1)	420-1 $\frac{1}{8}$	412 (500-1 $\frac{1}{8}$)
CIRCLING	460-1 450 (500-1)	560-1 550 (600-1)	640-1 $\frac{3}{4}$ 630 (700-1 $\frac{3}{4}$)	640-2 630 (700-2)

SE-3, 11 JUN 2026 to 09 JUL 2026

SE-3, 11 JUN 2026 to 09 JUL 2026