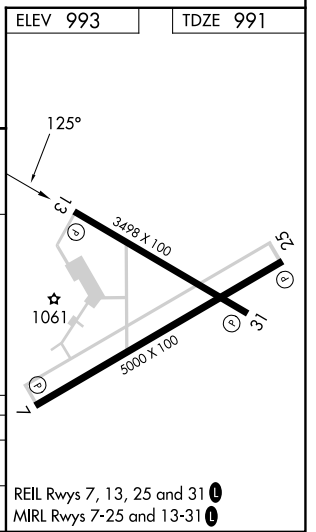
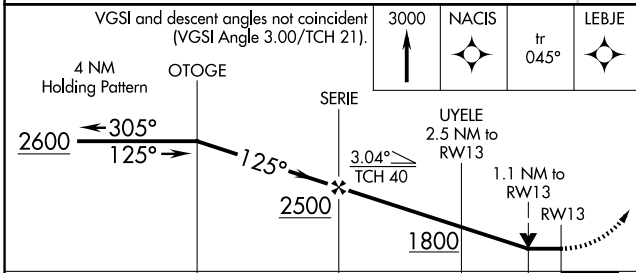
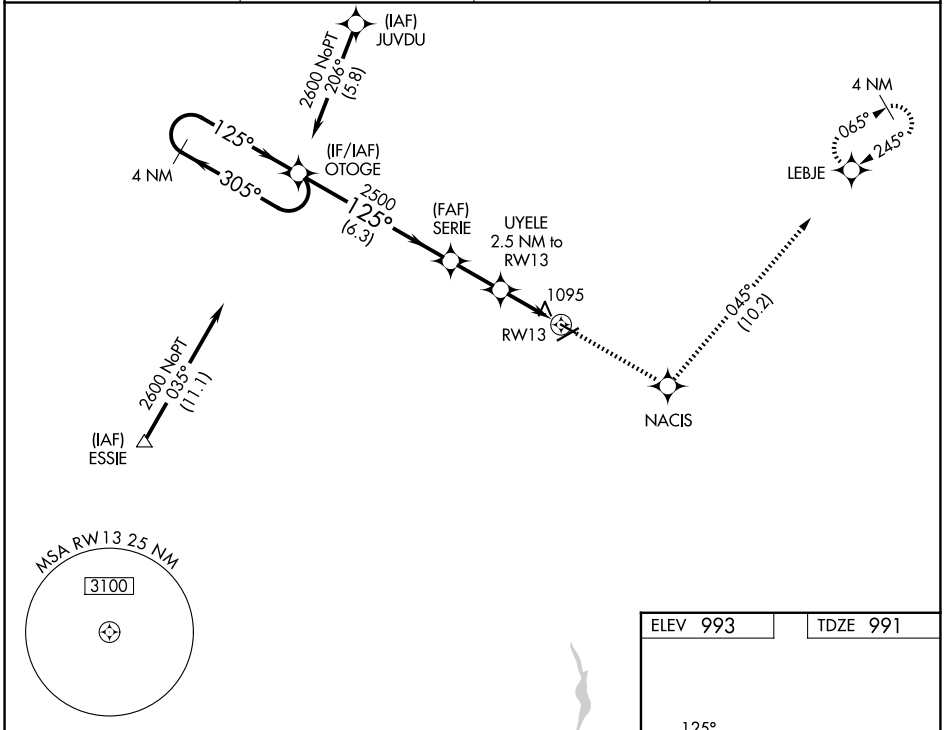


APP CRS	Rwy Ldg	<b>3498</b>
<b>125°</b>	TDZE	<b>991</b>
	Apt Elev	<b>993</b>

# RNAV (GPS) RWY 13

MARION MUNI (MNN)

RNP APCH.		MISSED APPROACH: Climb to 3000 direct NACIS and on track 045° to LEBJE and hold.	
<p>▼ Rwy 13 helicopter visibility reduction below ¾ SM NA. VDP NA when using Ohio State University altimeter setting. When local altimeter setting not received, use Ohio State University altimeter setting: increase all MDAs 100 feet and visibility Cat C/D ¾ SM.</p>			
ASOS	CLEVELAND APP CON *	CLNC DEL	UNICOM
<b>119.975</b>	<b>128.35 360.65</b>	<b>126.8</b>	<b>122.8 (CTAF) 0</b>



CATEGORY	A	B	C	D
LNVA MDA	1360-1 369 (400-1)		1360-1¼ 369 (400-1¼)	
CIRCLING	1480-1 487 (500-1)	1500-1 507 (600-1)	1700-2 707 (800-2)	1820-2¾ 827 (900-2¾)

REIL Rwy 7, 13, 25 and 31 0  
MIRL Rwy 7-25 and 13-31 0

EC-2, 11 JUN 2026 to 09 JUL 2026

EC-2, 11 JUN 2026 to 09 JUL 2026