

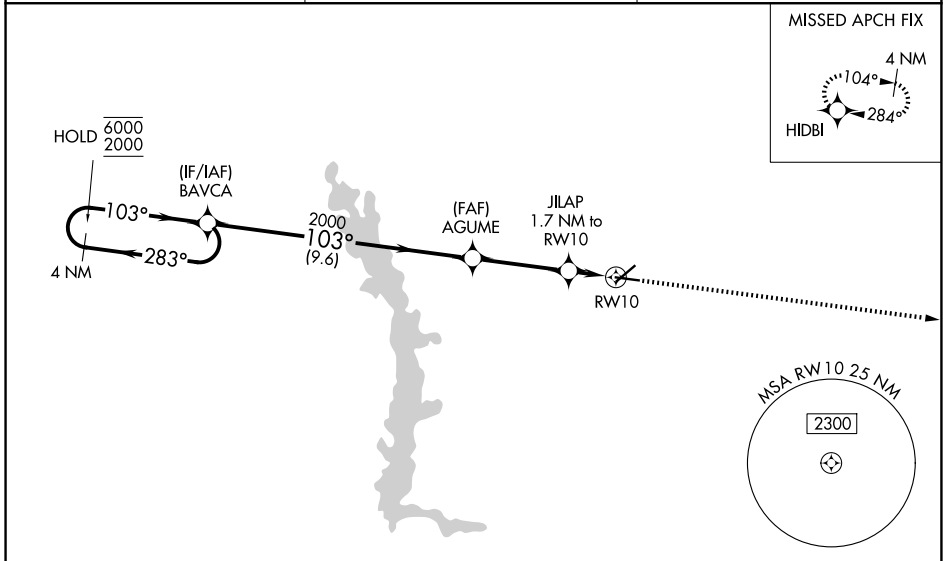
WAAS CH <b>57905</b> <b>W10A</b>	APP CRS <b>103°</b>	Rwy Ldg TDZE <b>308</b> Apt Elev <b>310</b>
--	------------------------	---

# RNAV (GPS) RWY 10

CRISP COUNTY-CORDELE (CKF)

RNP APCH - GPS.		ODALS 	MISSED APPROACH: Climb to 2100 direct HIDBI and hold.
<p> Rwy 10 helicopter visibility reduction below 3/4 SM NA. For uncompensated Baro-VNAV systems, LNAV/VNAV NA below -15°C or above 54°C. Inop table does not apply. Circling Rwy 6, 24, 28 NA at night.</p>			

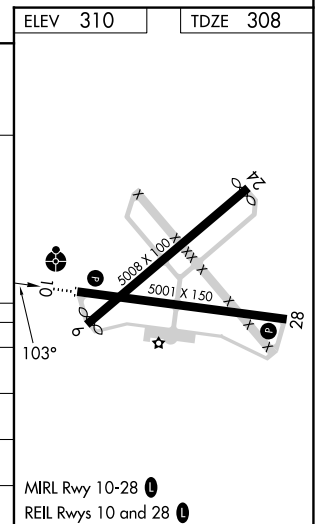
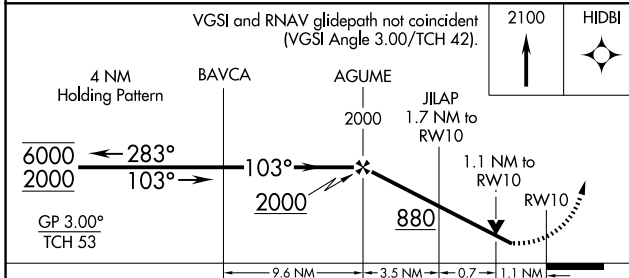
AWOS-3PT <b>119.325</b>	JACKSONVILLE CENTER <b>125.75 363.075</b>	UNICOM <b>123.050</b> (CTAF)
----------------------------	--	---------------------------------



SE-4, 11 JUN 2026 to 09 JUL 2026

SE-4, 11 JUN 2026 to 09 JUL 2026

ELEV 310	TDZE 308
----------	----------



CATEGORY	A	B	C	D
LPV DA		612-1	304 (400-1)	
LNAV/ VNAV DA		680-1	372 (400-1)	
LNAV MDA		680-1	372 (400-1)	
CIRCLING	820-1	510 (600-1)	1040-2 1/4 730 (800-2 1/4)	1160-2 3/4 850 (900-2 3/4)