


WAAS CH <b>93824</b> <b>W04A</b>	APP CRS <b>043°</b>	Rwy Ldg TDZE Apt Elev	<b>6000</b> <b>253</b> <b>257</b>
--	------------------------	-----------------------------	---

# RNAV (GPS) RWY 4

DOUGLAS MUNI (DQH)

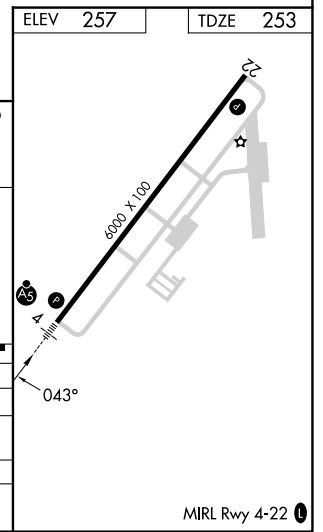
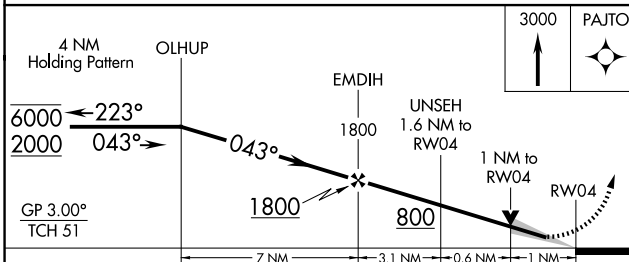
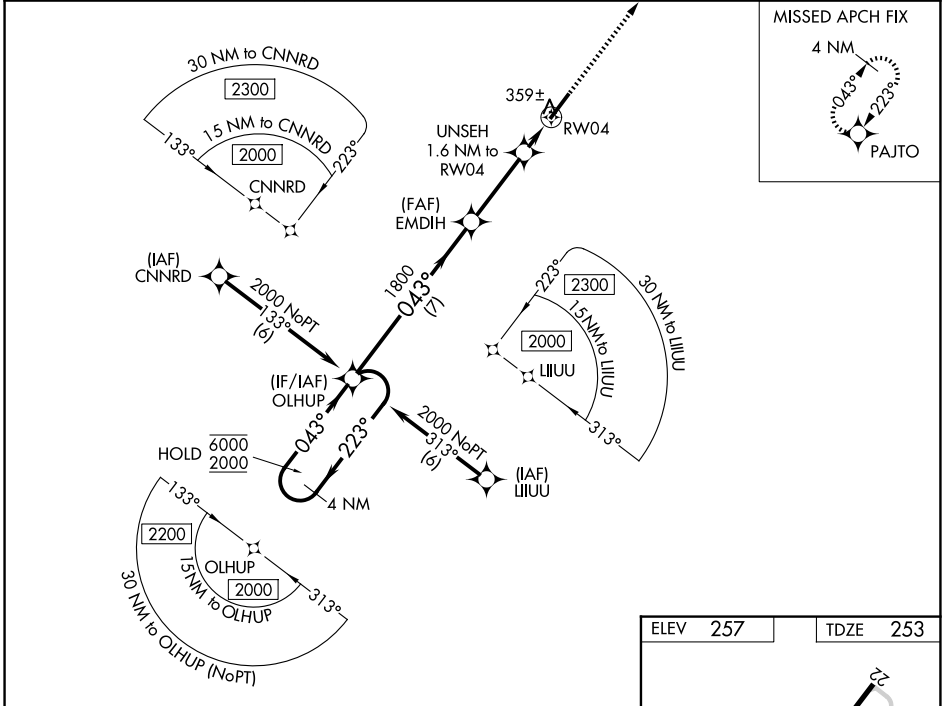
RNP APCH - GPS.

⚠ For uncompensated Baro-VNAV systems, LNAV/VNAV NA below -15°C or above 54°C. For inop ALS, increase LNAV/VNAV all Cats visibility to 3/8 SM and LNAV Cats C and D visibility to 1 SM.

MALSR 

MISSED APPROACH: Climb to 3000 direct PAJTO and hold, continue climb-in-hold to 3000.

AWOS-3 <b>119.075</b>	JACKSONVILLE CENTER <b>127.575 269.025</b>	UNICOM <b>122.8 (CTAF) 0</b>
--------------------------	---	---------------------------------



CATEGORY	A	B	C	D
LPV DA		453-1/2	200 (200-1/2)	
LNAV/VNAV DA		540-1/2	287 (300-1/2)	
LNAV MDA	620-1/2	367 (400-1/2)	620-5/8	367 (400-5/8)
CIRCLING	720-1 463 (500-1)	820-1 563 (600-1)	960-2 703 (800-2)	960-2 1/4 703 (800-2 1/4)

SE-4, 11 JUN 2026 to 09 JUL 2026

SE-4, 11 JUN 2026 to 09 JUL 2026