

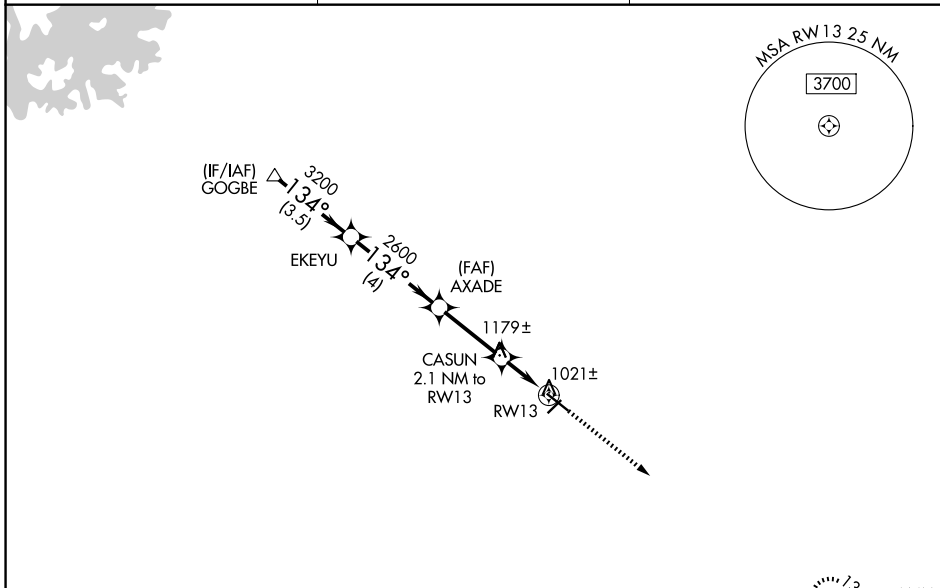
WAAS CH <b>90305</b> <b>W13A</b>	APP CRS <b>134°</b>	Rwy Ldg TDZE Apt Elev	<b>5105</b> <b>933</b> <b>934</b>
--	------------------------	-----------------------------	---

# RNAV (GPS) RWY 13

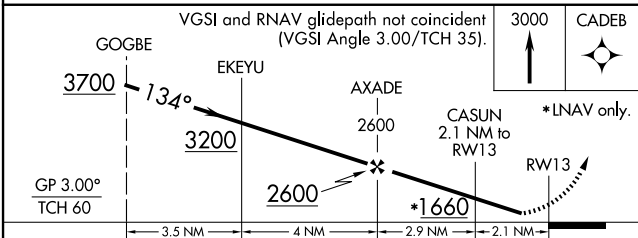
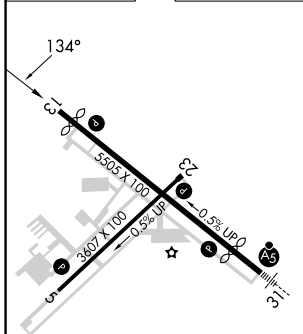
BARROW COUNTY (WDR)

RNP APCH.	MISSED APPROACH: Climb to 3000 direct CADEB and hold.
<p><b>▼</b> For uncompensated Baro-VNAV systems, LNAV/VNAV NA below -16°C or above 54°C. Straight-in Rwy 13 NA at night, Circling Rwy 13, 23 NA at night. Rwy 13 helicopter visibility reduction below 1 SM NA.</p>	

AWOS-3 <b>118.575</b>	ATLANTA APP CON ★ <b>132.475 291.1</b>	UNICOM <b>123.0 (CTAF) 0</b>
--------------------------	---	---------------------------------



ELEV 934	<b>D</b>	TDZE 933
----------	----------	----------



CATEGORY	A	B	C	D
LPV DA		1207-1	274 (300-1)	
LNAV/VNAV DA		1422-1 $\frac{3}{8}$	489 (500-1 $\frac{3}{8}$ )	
LNAV MDA		1300-1	367 (400-1)	
CIRCLING	1400-1	1580-1	1660-2	1660-2 $\frac{1}{4}$
	466 (500-1)	646 (700-1)	726 (800-2)	726 (800-2 $\frac{1}{4}$ )

REIL Rwy 13  
HIRL Rwy 13-31  
MIRL Rwy 5-23