

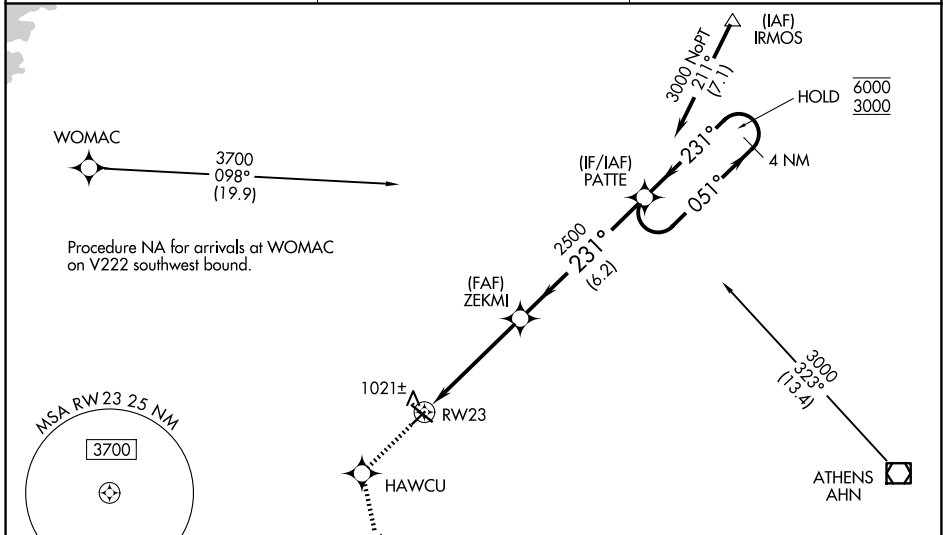
WAAS CH <b>82516</b> <b>W23A</b>	APP CRS <b>231°</b>	Rwy Ldg TDZE Apt Elev	<b>3607</b> <b>929</b> <b>934</b>
--	------------------------	-----------------------------	---

# RNAV (GPS) RWY 23

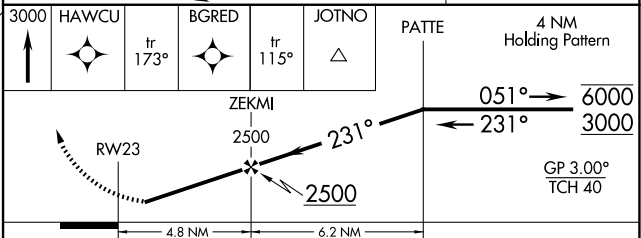
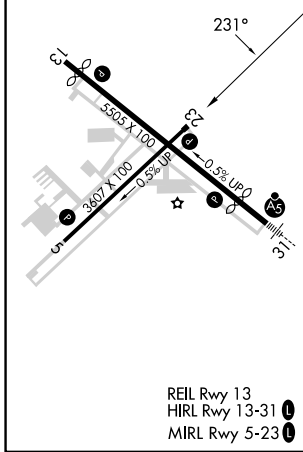
BARROW COUNTY (WDR)

RNP APCH.	MISSED APPROACH: Climb to 3000 direct HAWCU and on track 173° to BGRED and on track 115° to JOTNO and hold.
-----------	---

AWOS-3 <b>118.575</b>	ATLANTA APP CON ★ <b>132.475 291.1</b>	UNICOM <b>123.0 (CTAF)</b>
--------------------------	---	-------------------------------



ELEV 934	<b>D</b>	TDZE 929
----------	----------	----------



CATEGORY	A	B	C	D
LPV DA		1179-1	250 (300-1)	
LNAV/VNAV DA		1274-1	345 (400-1)	
LNAV MDA	1320-1	391 (400-1)	1320-1½	391 (400-1½)
CIRCLING	1400-1 466 (500-1)	1580-1 646 (700-1)	1660-2 726 (800-2)	1660-2¼ 726 (800-2¼)

SE-4, 11 JUN 2026 to 09 JUL 2026

SE-4, 11 JUN 2026 to 09 JUL 2026