

(ESTRR6.ESTRR) 26134

ESTRR SIX DEPARTURE (RNAV)

ROCK HILL/YORK COUNTY/BRYANT FLD (UZA)
ROCK HILL, SOUTH CAROLINA

AL-5361 (FAA)

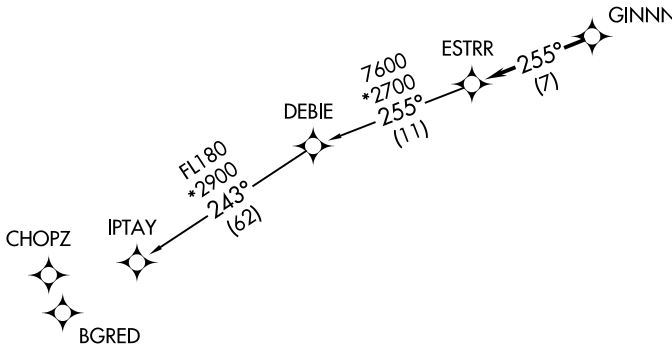
CHARLOTTE DEP CON
120.05 307.8
ASOS
120.775

RNAV 1 - DME/DME/IRU or GPS.

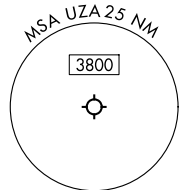
RADAR required.

**TOP ALTITUDE:
3000**

TAKEOFF MINIMUMS
Rwys 2, 20: Standard.



- NOTE: Turbojet only.
- NOTE: If unable to accept climb rates, advise ATC on initial contact.
- NOTE: Transponder code will be issued via PDC or CLT CLNC DEL.
- NOTE: Upon reaching 10000 MSL, accelerate to and maintain 280K, if unable advise ATC.



NOTE: Chart not to scale.



DEPARTURE ROUTE DESCRIPTION

Climb on heading assigned by ATC for RADAR vectors to GINNN, then on track 255° to ESTRR, then on IPTAY Transition. Maintain 3000, expect filed altitude 10 minutes after departure.

IPTAY TRANSITION (ESTRR6.IPTAY)

ESTRR SIX DEPARTURE (RNAV)
(ESTRR6.ESTRR) 14MAY26

ROCK HILL, SOUTH CAROLINA
ROCK HILL/YORK COUNTY/BRYANT FLD (UZA)

SE-2, 11 JUN 2026 to 09 JUL 2026

SE-2, 11 JUN 2026 to 09 JUL 2026