

# KILNS SIX DEPARTURE (RNAV)

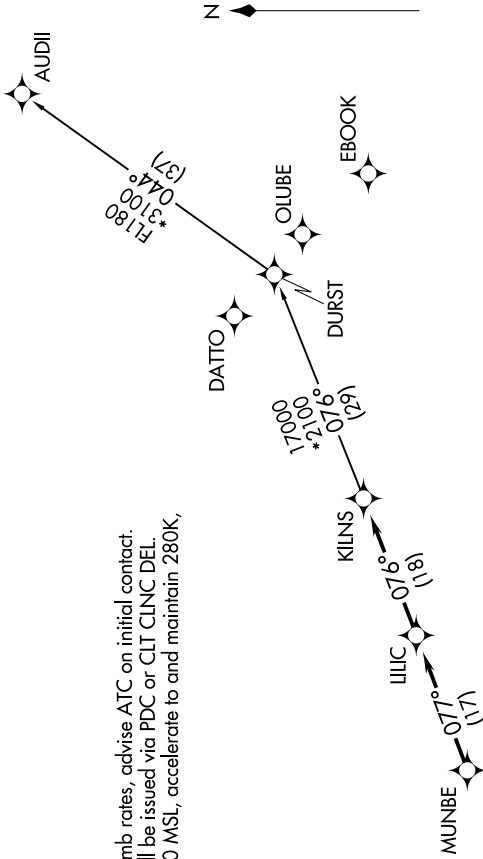
SE-2, 11 JUN 2026 to 09 JUL 2026

CHARLOTTE DEP CON  
120.05 307.8  
ASOS  
120.775

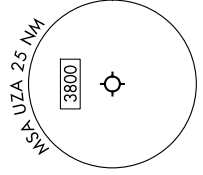
RNAV 1 - DME/DME/IRU or GPS.  
RADAR required.

**TOP ALTITUDE:  
3000**

- NOTE: Turbojet only.
- NOTE: If unable to accept climb rates, advise ATC on initial contact.
- NOTE: Transponder code will be issued via PDC or CLT CLNC DEL.
- NOTE: Upon reaching 10000 MSL, accelerate to and maintain 280K, if unable advise ATC.



TAKEOFF MINIMUMS  
Rwys 2, 20: Standard.



## DEPARTURE ROUTE DESCRIPTION

Climb on heading assigned by ATC for RADAR vectors to MUNBE, then on depicted route to KILNS, then on AUDII Transition. Maintain 3000, expect filed altitude 10 minutes after departure.

AUDII TRANSITION (KILNS6.AUDII)

NOTE: Chart not to scale.

SE-2, 11 JUN 2026 to 09 JUL 2026

# KILNS SIX DEPARTURE (RNAV)