

WAAS CH <b>90325</b> <b>W20A</b>	APP CRS <b>196°</b>	Rwy Ldg TDZE Apt Elev	<b>5500</b> <b>662</b> <b>666</b>
----------------------------------------	------------------------	-----------------------------	-----------------------------------------

# RNAV (GPS) RWY 20

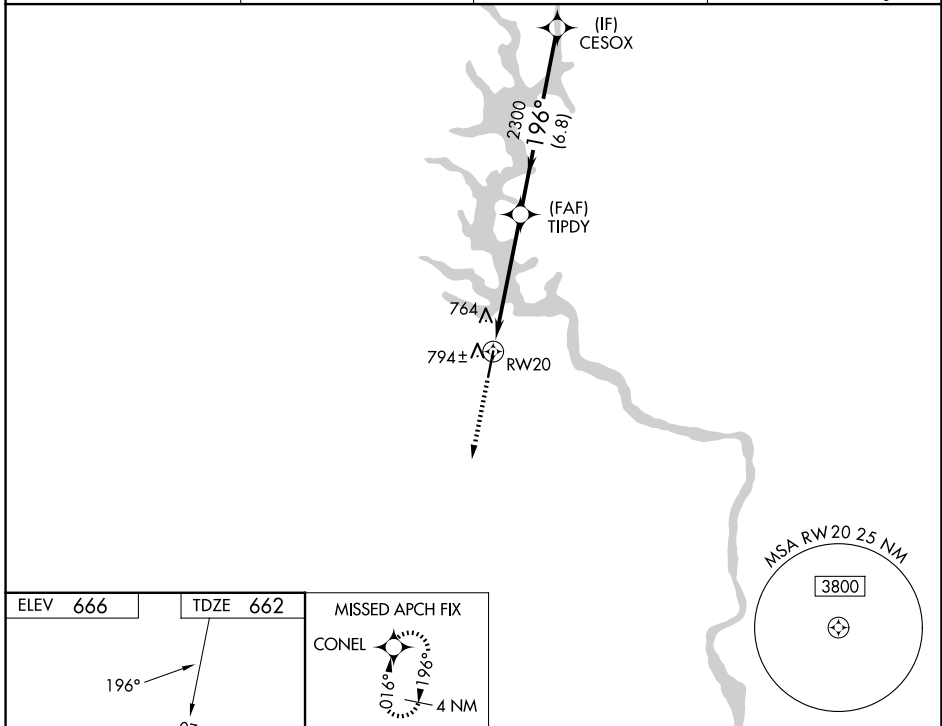
ROCK HILL/YORK COUNTY/BRYANT FLD (UZA)

**RNP APCH-GPS.**

**⚠** For uncompensated Baro-VNAV systems, procedure NA below -16°C or above 39°C.  
**⚠** When local altimeter setting not received, use Charlotte/Douglas Intl altimeter setting and increase LPV DA to 957 feet, LNAV/VNAV DA to 1084 feet, and all MDAs 60 feet; increase LPV visibility all Cats 1/8 SM, LNAV/VNAV visibility all Cats 1/4 SM, and LNAV visibility Cat C/D 1/4 SM. VDP and Baro-VNAV NA when using Charlotte/Douglas Intl altimeter setting. Rwy 20 helicopter visibility reduction below 3/4 SM NA.

**MISSED APPROACH:** Climb to 3000 direct CONEL and hold.

ASOS <b>120.775</b>	CHARLOTTE APP CON <b>120.05 307.8</b>	GCO <b>121.725</b>	UNICOM <b>123.05 (CTAF) 0</b>
------------------------	------------------------------------------	-----------------------	----------------------------------



ELEV 666	TDZE 662	MISSED APCH FIX CONEL  196° 4 NM			