

WAAS CH 90230 W19A	APP CRS 186°	Rwy Ldg TDZE Apt Elev	5201 915 925
--	------------------------	-----------------------------	---

RNAV (GPS) RWY 19

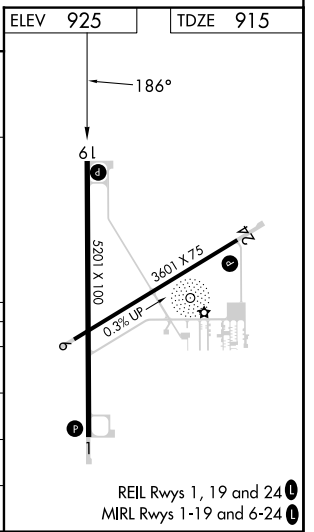
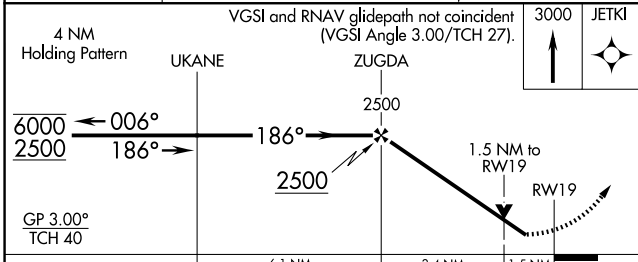
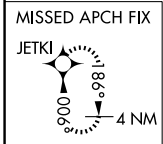
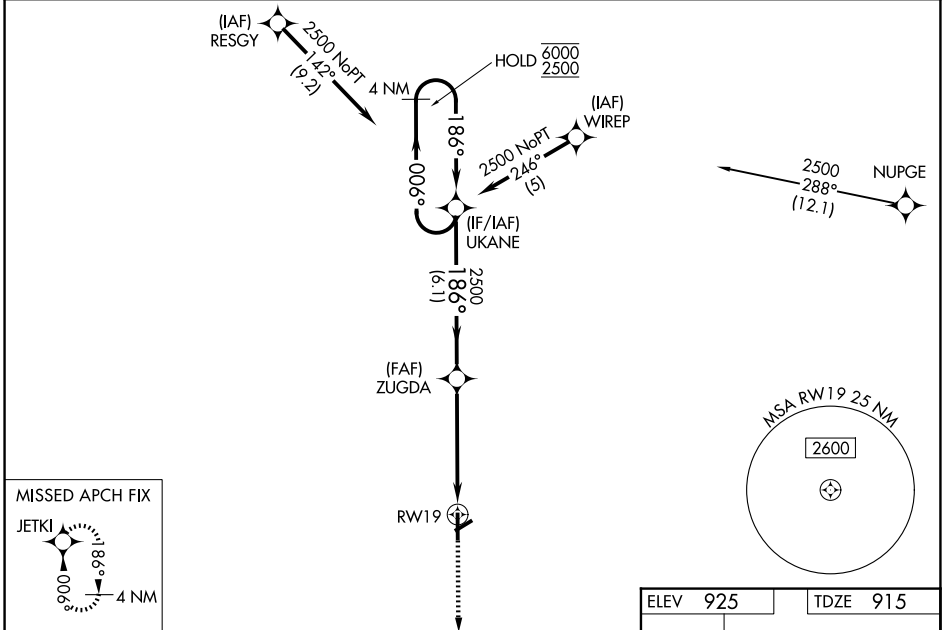
KIRSCH MUNI (IRS)

RNP APCH - GPS.

⚠ Rwy 19 helicopter visibility reduction below $\frac{3}{4}$ SM NA. For uncompensated Baro-VNAV systems, LNAV/VNAV NA below -16°C or above 54°C. Baro-VNAV and VDP NA when using HAI altimeter setting. Circling Rwy 6 NA at night. When local altimeter setting not received, use HAI altimeter setting and increase LPV DA to 1276 feet; increase LNAV/VNAV DA to 1441 feet and all visibilities $\frac{1}{8}$ SM. Increase all MDAs 60 feet and LNAV visibility Cat C/D $\frac{1}{4}$ SM, and Circling visibility Cat C/D $\frac{1}{4}$ SM.

MISSED APPROACH:
Climb to 3000 direct JETKI and hold.

AWOS-3P 121.325	GREAT LAKES APP CON ★ 121.2 239.25	UNICOM 123.05 (CTAF) 0
---------------------------	--	----------------------------------



CATEGORY	A	B	C	D
LPV DA		1235-1	320 (400-1)	
LNAV/VNAV DA		1229-1	314 (400-1)	
LNAV MDA	1400-1	485 (500-1)	1400-1 $\frac{3}{8}$	485 (500-1 $\frac{3}{8}$)
CIRCLING	1440-1	515 (600-1)	1620-2 695 (700-2)	1620-2 $\frac{1}{4}$ 695 (700-2 $\frac{1}{4}$)

EC-1, 11 JUN 2026 to 09 JUL 2026

EC-1, 11 JUN 2026 to 09 JUL 2026