

| | | | |
|--|------------------------|-----------------------------|---|
| WAAS CH 99501 W16A | APP CRS 159° | Rwy Ldg TDZE Apt Elev | 5003 1278 1278 |
|--|------------------------|-----------------------------|---|

RNAV (GPS) RWY 16

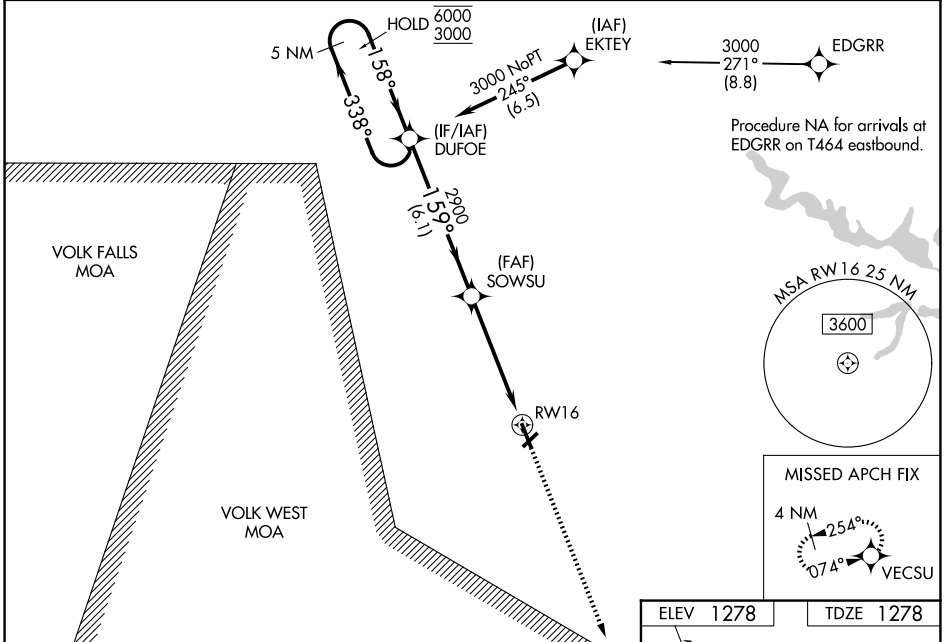
MARSHFIELD MUNI (MFI)

RNP APCH - GPS.

▼ Baro-VNAV and VDP NA when using CWA altimeter setting. For uncompensated Baro-VNAV systems, LNAV/VNAV NA below -22°C or above 54°C. Rwy 16 helicopter visibility reduction below 3/4 SM NA. When local altimeter setting not received, use CWA altimeter setting and increase all DA 56 feet and LPV visibilities 1/8 SM; increase LNAV/VNAV visibilities 1/4 SM; increase all MDAs 60 feet and LNAV visibility Cat C/D 1/4 SM.

⚠ MISSED APPROACH: Climb to 3000 direct VECSU and hold.

| | | |
|------------------------|--|-------------------------------|
| ASOS 121.575 | MINNEAPOLIS CENTER 124.4 317.7 | UNICOM 123.0 (CTAF) |
|------------------------|--|-------------------------------|



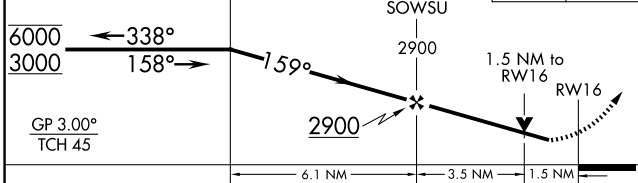
5 NM Holding Pattern

VGSI and RNAV glidepath not coincident (VGSI Angle 3.00/TCH 33).

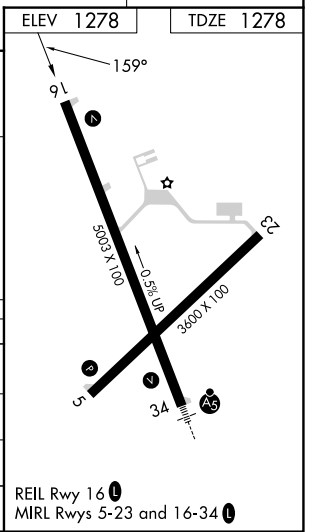
DUFOE

SOWSU

3000 VECSU



| CATEGORY | A | B | C | D |
|--------------|----------------------------|-------------|-------------------------------|-------------------------------|
| LPV DA | 1639-1 361 (400-1) | | | |
| LNAV/VNAV DA | 1695-1 1/8 417 (500-1 1/8) | | | |
| LNAV MDA | 1780-1 | 502 (600-1) | 1780-1 3/8 | 502 (600-1 3/8) |
| CIRCLING | 1780-1 | 502 (600-1) | 2020-2 1/4 742 (800-2 1/4) | 2020-2 1/2 742 (800-2 1/2) |



EC-3, 11 JUN 2026 to 09 JUL 2026

EC-3, 11 JUN 2026 to 09 JUL 2026