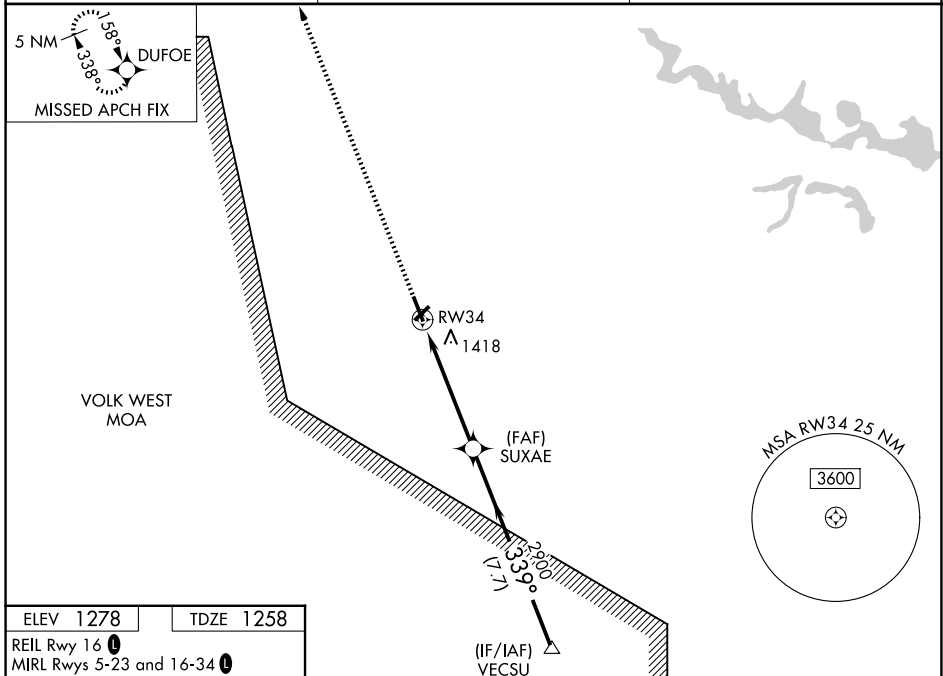


WAAS CH <b>58101</b> <b>W34A</b>	APP CRS <b>339°</b>	Rwy Ldg <b>5003</b> TDZE <b>1258</b> Apt Elev <b>1278</b>
--	------------------------	---

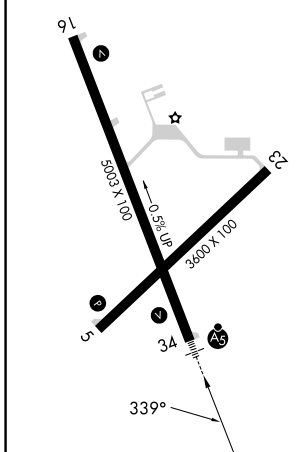
# RNAV (GPS) RWY 34

MARSHFIELD MUNI (MFI)

<p>For inoperative MALSR increase LPV all Cats visibility to 1, increase LNAV Cats A and B to 1 and Cat D to 1/4. If local altimeter setting not received, use Central Wisconsin altimeter setting and increase all DAs/MDAs 60 feet. VDP and Baro-VNAV NA when using Central Wisconsin altimeter setting. For uncompensated Baro-VNAV systems, LNAV/VNAV NA below -17° C (2° F) or above 46° C (115° F). DME/DME RNP-0.3 NA.</p>		<p>MALSR</p>	<p>MISSED APPROACH: Climb to 3000 direct DUFOE and hold.</p>
<p>ASOS <b>121.575</b></p>	<p>MINNEAPOLIS CENTER <b>124.4 317.7</b></p>	<p>UNICOM <b>123.0 (CTAF)</b></p>	



ELEV 1278	TDZE 1258
REIL Rwy 16	MIRL Rwy 5-23 and 16-34



3000	DUFOE	SUXAE	VECSU	Procedure Turn NA
*LNAV only	*1.2 NM to RW34	2900	2900	GP 3.00° TCH 42
1.2	3.8 NM	7.7 NM		
CATEGORY	A	B	C	D
LPV DA	1508-3/4		250 (300-3/4)	
LNAV/VNAV DA	1718-1/4		460 (500-1/4)	
LNAV MDA	1680-3/4		422 (500-3/4)	
			1680-1 422 (500-1)	
CIRCLING	1760-1 3/4		482 (500-1 3/4)	
			2020-2 1/4 742 (800-2 1/4)	
			2020-2 1/2 742 (800-2 1/2)	

EC-3, 11 JUN 2026 to 09 JUL 2026

EC-3, 11 JUN 2026 to 09 JUL 2026