

(SNDOA3.SNDOA) 24025

AL-5369 (FAA)

SHENANDOAH VALLEY RGNL (SHD)

# SHENANDOAH THREE DEPARTURE

STAUNTON/WAYNESBORO/HARRISONBURG, VIRGINIA

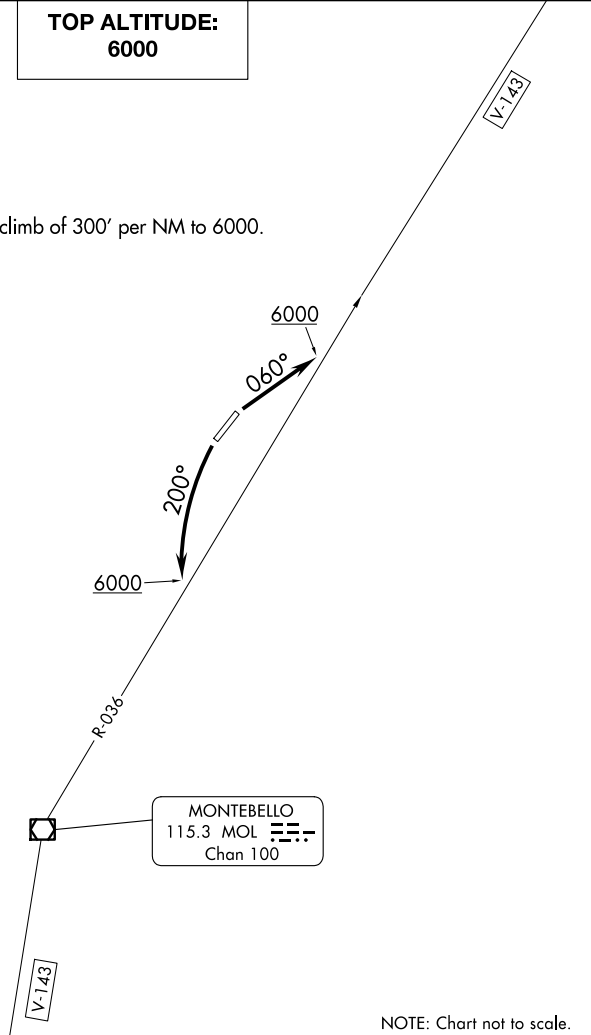
AWOS-3  
124.925  
CTAF  
123.0  
CLNC  
118.35  
POTOMAC DEP CON  
132.85 323.125

**TOP ALTITUDE:  
6000**

**TAKEOFF MINIMUMS:**

Rwys 5, 23: Standard with minimum climb of 300' per NM to 6000.

NOTE: RADAR required.



NOTE: Chart not to scale.



## DEPARTURE ROUTE DESCRIPTION

TAKEOFF RUNWAY 5: Climb heading 060° to 6000 to intercept MOL VOR/DME R-036 outbound, thence....

TAKEOFF RUNWAY 23: Climbing left turn to 6000 heading 200° to intercept MOL VOR/DME R-036 inbound, thence....

....expect radar vectors to filed/assigned route. Expect clearance to filed altitude/flight level 10 minutes after departure.

# SHENANDOAH THREE DEPARTURE

STAUNTON/WAYNESBORO/HARRISONBURG, VIRGINIA

SHENANDOAH VALLEY RGNL (SHD)

(SNDOA3.SNDOA) 10NOV16

NE-3, 11 JUN 2026 to 09 JUL 2026

NE-3, 11 JUN 2026 to 09 JUL 2026