

GTIKE FIVE DEPARTURE (RNAV)
(GTIKES, GTIKE) 27NOV25

BURKE LAKEFRONT (BKL)
CLEVELAND, OHIO

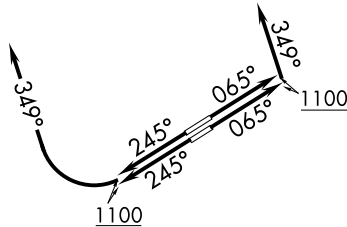
CLEVELAND DEP CON
125.35 346.325
ATIS
125.25
CLINC DEL
339.8
121.9 (when twr closed)
GND CON
121.9 339.8
LAKEFRONT TOWER*
124.3 (CTAF) 339.8

RNAV 1 - DME/DME/IRU or GPS.

RADAR required.

TOP ALTITUDE:
ASSIGNED BY ATC

NOTE: Rwy 6R/24L: Takeoff minimums NA when control tower closed.

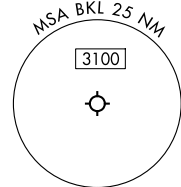
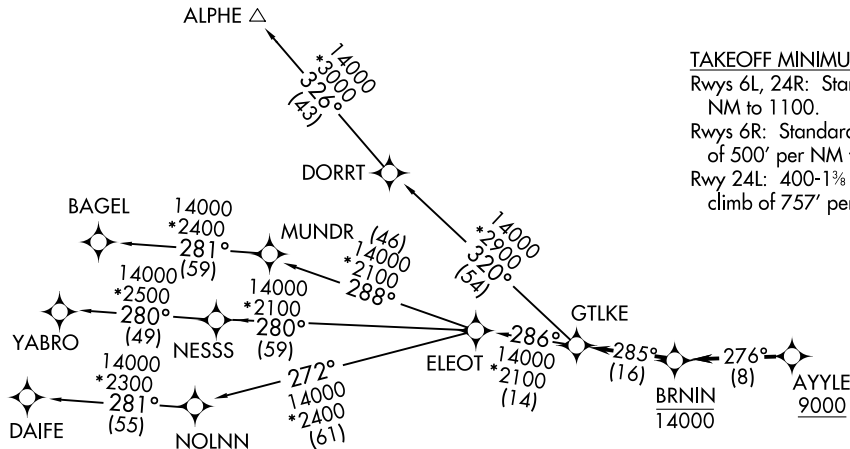


TAKEOFF MINIMUMS:

Rwys 6L, 24R: Standard with minimum climb of 500' per NM to 1100.

Rwys 6R: Standard with minimum climb of 500' per NM to 1100. NA when control tower closed.

Rwy 24L: 400-1 2/3 or standard with minimum climb of 757' per NM to 1000. NA when control tower closed.



NOTE: Chart not to scale.

(CONTINUED ON FOLLOWING PAGE)

(GTIKES, GTIKE) 25331
GTIKE FIVE DEPARTURE (RNAV)

AL-5370 (FAA)

BURKE LAKEFRONT (BKL)
CLEVELAND, OHIO

GTLKE FIVE DEPARTURE (RNAV)



DEPARTURE ROUTE DESCRIPTION

TAKEOFF RUNWAYS 6L/R: Climb on heading 065° to 1100, then on heading 349° or as assigned by ATC, maintain 2000 (do not climb above 2000) for RADAR vectors to cross AYYLE at or above 9000, thence....

TAKEOFF RUNWAYS 24L/R: Climb on heading 245° to 1100, then right turn heading 349° or as assigned by ATC, maintain 2000 (do not climb above 2000) for RADAR vectors to cross AYYLE at or above 9000, thence....

....on track 276° to cross BRNIN at or below 14000, then on track 285° to GTLKE then on (transition). Maintain ATC assigned altitude, expect filed altitude 10 minutes after departure.

ALPHE TRANSITION (GTLKE5.ALPHE)

BAGEL TRANSITION (GTLKE5.BAGEL)

DAIFE TRANSITION (GTLKE5.DAIFE)

YABRO TRANSITION (GTLKE5.YABRO)

EC-2, 11 JUN 2026 to 09 JUL 2026

EC-2, 11 JUN 2026 to 09 JUL 2026