

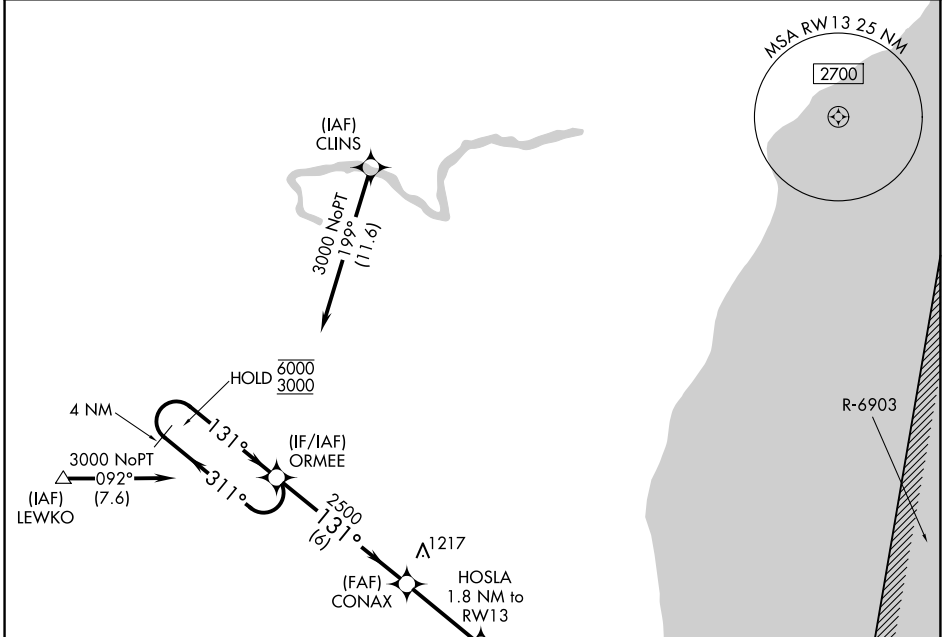
APP CRS	Rwy Ldg	5002
131°	TDZE	755
	Apt Elev	755

RNAV (GPS) RWY 13

SHEBOYGAN COUNTY MEML INTL (SBM)

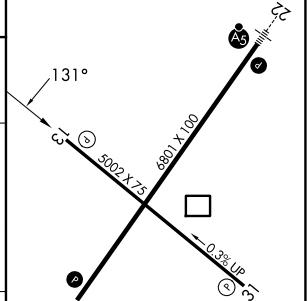
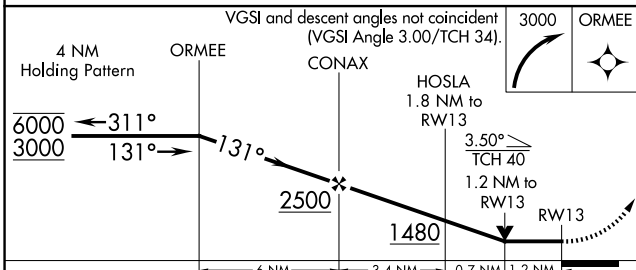
RNP APCH - GPS.	MISSED APPROACH: Climbing right turn to 3000 direct ORMEE and hold.
Rwy 13 helicopter visibility reduction below 3/4 SM NA.	

ASOS 118.425	MILWAUKEE APP CON 127.375 263.075	GCO 121.725	UNICOM 122.7 (CTAF) 1
------------------------	---	-----------------------	---------------------------------



ELEV 755	TDZE 755
----------	----------

- REIL Rwy 4 1
- MIRL Rwy 13-31 1
- HIRL Rwy 4-22 1



CATEGORY	A	B	C	D
LNVA MDA	1160-1	405 (500-1)	1160-1 1/8	405 (500-1 1/8)
CIRCLING	1200-1 445 (500-1)	1240-1 485 (500-1)	1340-1 1/2 585 (600-1 1/2)	1360-2 605 (700-2)

EC-3, 11 JUN 2026 to 09 JUL 2026

EC-3, 11 JUN 2026 to 09 JUL 2026