

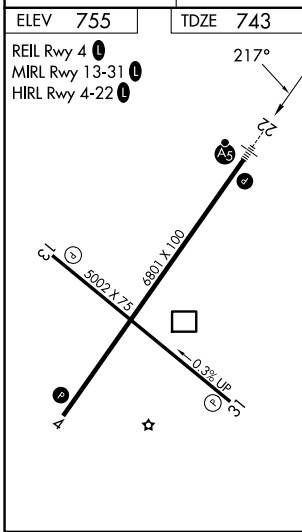
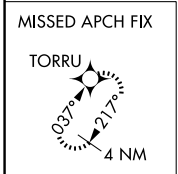
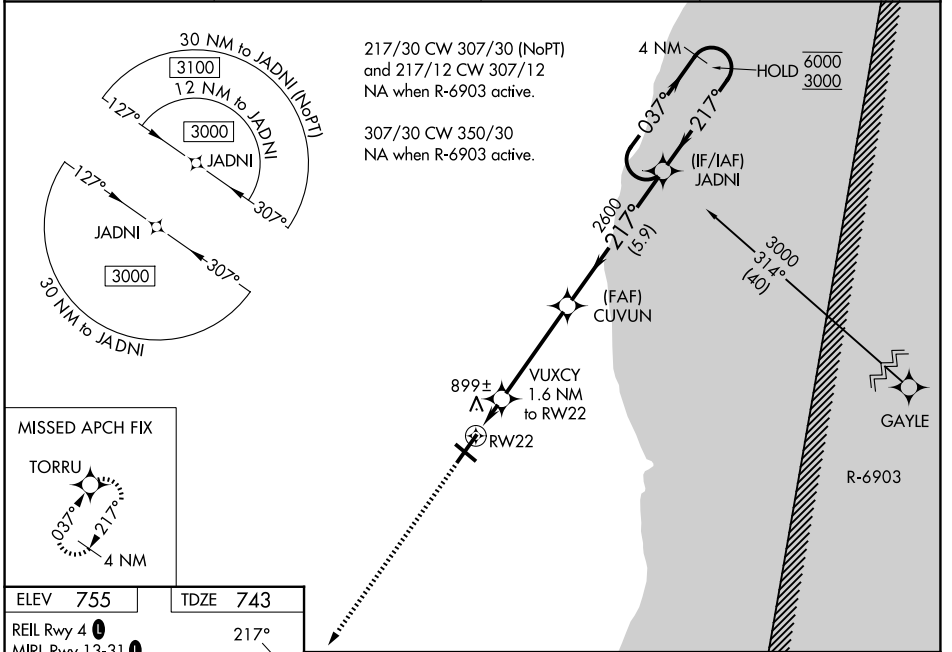
WAAS CH 65904 W22A	APP CRS 217°	Rwy Ldg TDZE Apt Elev	6801 743 755
--	------------------------	-----------------------------	---

RNAV (GPS) RWY 22

SHEBOYGAN COUNTY MEML INTL (SBM)

RNP APCH - GPS.		MALSR	MISSED APPROACH: Climb to 3000 direct TORRU and hold.
<p>For uncorrected Baro-VNAV systems, LNAV/VNAV NA below -19°C or above 54°C. For inop ALS, increase LNAV Cats C and D visibility to 1½ SM.</p>			

ASOS 118.425	MILWAUKEE APP CON 127.375 263.075	GCO 121.725	UNICOM 122.7 (CTAF)
------------------------	---	-----------------------	-------------------------------



CATEGORY	A	B	C	D
LPV DA		943-½	200 (200-½)	
LNAV/VNAV DA		1188-¾	445 (500-¾)	
LNAV MDA	1160-½	417 (500-½)	1160-¾	417 (500-¾)
CIRCLING	1200-1 445 (500-1)	1240-1 485 (500-1)	1340-1½ 585 (600-1½)	1360-2 605 (700-2)

EC-3, 11 JUN 2026 to 09 JUL 2026

EC-3, 11 JUN 2026 to 09 JUL 2026