

WAAS CH <b>61104</b> <b>W04A</b>	APP CRS <b>037°</b>	Rwy Ldg TDZE Apt Elev	<b>6801</b> <b>744</b> <b>755</b>
--	------------------------	-----------------------------	---

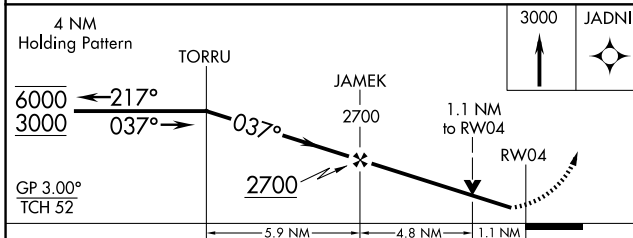
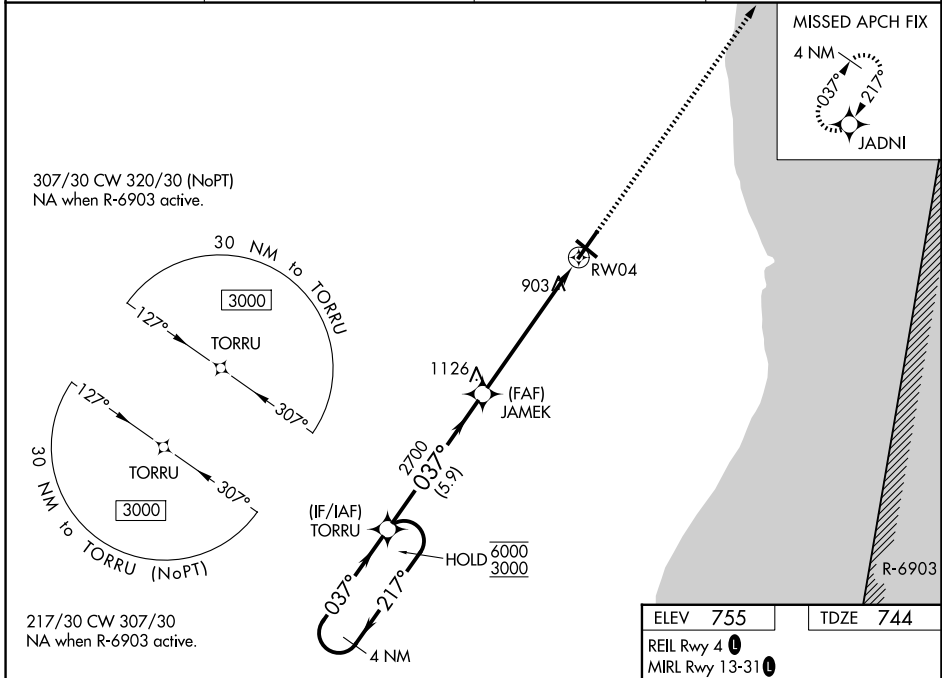
**RNAV (GPS) RWY 4**  
SHEBOYGAN COUNTY MEML INTL (SBM)

RNP APCH - GPS.

**⚠** Rwy 4 helicopter visibility reduction below 3/4 SM NA. For uncompensated Baro-VNAV systems, LNAV/VNAV NA below -19°C or above 54°C.

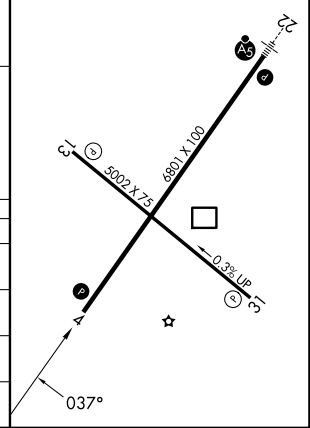
MISSED APPROACH: Climb to 3000 direct JADNI and hold.

ASOS <b>118.425</b>	MILWAUKEE APP CON <b>127.375 263.075</b>	GCO <b>121.725</b>	UNICOM <b>122.7 (CTAF) 0</b>
------------------------	---	-----------------------	---------------------------------



ELEV 755	TDZE 744
REIL Rwy 4 0	
MIRL Rwy 13-31 0	
HIRL Rwy 4-22 0	

CATEGORY	A	B	C	D
LPV DA		994-1	250 (300-1)	
LNAV/VNAV DA		1193-1 3/8	449 (500-1 3/8)	
LNAV MDA	1160-1	416 (500-1)	1160-1 1/8	416 (500-1 1/8)
CIRCLING	1200-1 445 (500-1)	1240-1 485 (500-1)	1340-1 1/2 585 (600-1 1/2)	1360-2 605 (700-2)



EC-3, 11 JUN 2026 to 09 JUL 2026

EC-3, 11 JUN 2026 to 09 JUL 2026