

RNAV (GPS) RWY 13

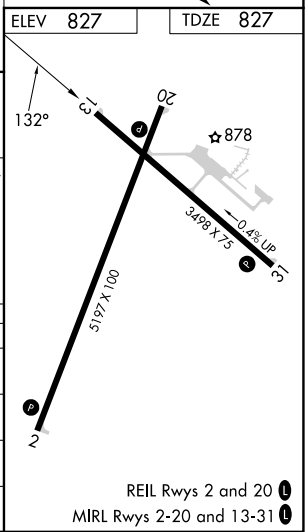
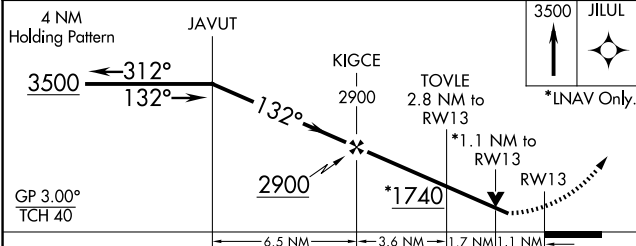
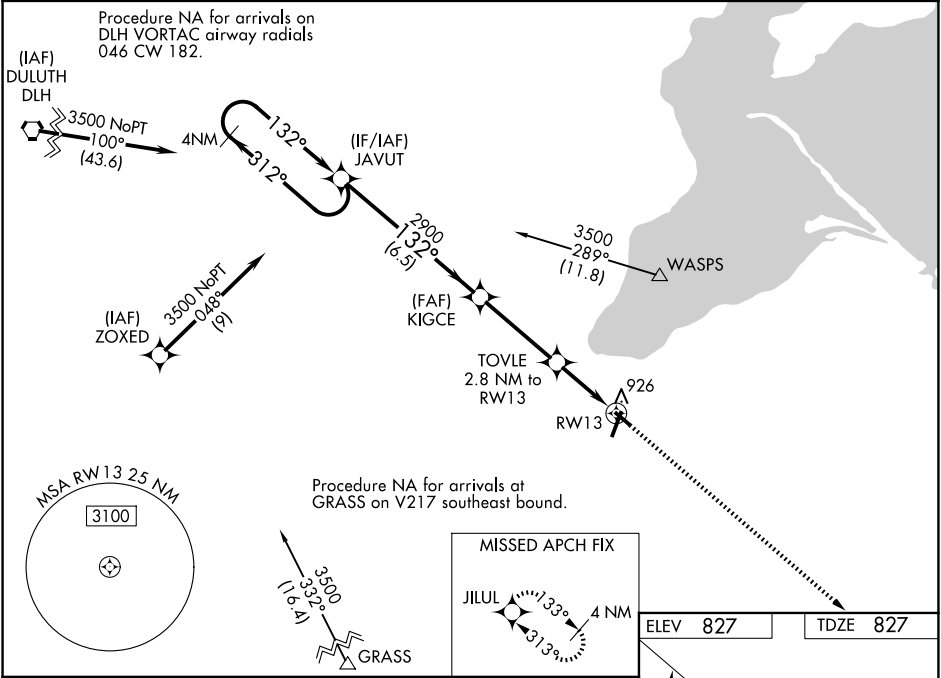
JOHN F KENNEDY MEML (ASX)

WAAS CH 61107 W13A	APP CRS 132°	Rwy Ldg TDZE Apt Elev	3498 827 827
--	------------------------	-----------------------------	---

⚠ For uncompensated Baro-VNAV systems, LNAV/VNAV NA below -28°C (-18°F) or above 54°C (130°F). DME/DME RNP-0.3 NA. Helicopter visibility reduction below 3/4 SM NA. Baro-VNAV and VDP NA when using Ironwood altimeter setting. When local altimeter setting not received, use Ironwood altimeter setting and increase all DAs 132 feet and all MDAs 140 feet; increase LPV, LNAV/VNAV all Cats, and LNAV Cat C/D visibility 3/8 mile and Circling Cat C/D visibility 1/2 mile.

MISSED APPROACH:
Climb to 3500 direct JILUL and hold.

ASOS 126.775	MINNEAPOLIS CENTER 126.45 276.4	GCO 122.25	UNICOM 122.8 (CTAF) 0
------------------------	---	----------------------	---------------------------------



CATEGORY	A	B	C	D
LPV DA		1077-7/8	250 (300-7/8)	
LNAV/DA		1110-1	283 (300-1)	
LNAV MDA		1200-1	373 (400-1)	
CIRCLING	1240-1 413 (500-1)	1280-1 453 (500-1)	1440-1 1/4 613 (700-1 1/4)	1560-2 1/4 733 (800-2 1/4)

EC-3, 11 JUN 2026 to 09 JUL 2026

EC-3, 11 JUN 2026 to 09 JUL 2026