

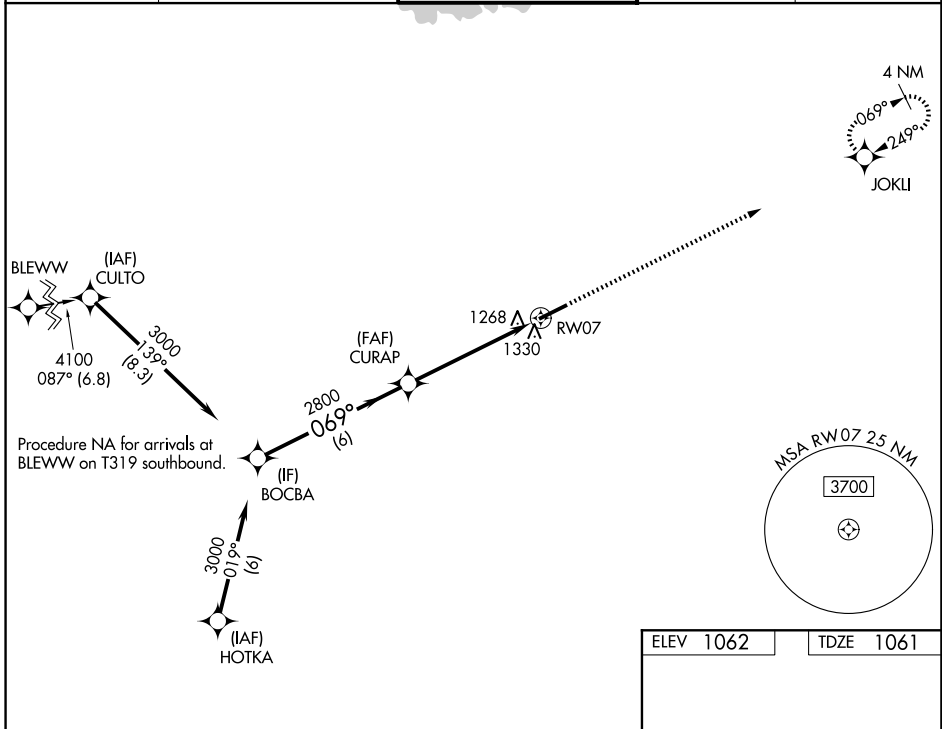
WAAS CH <b>97621</b> <b>W07A</b>	APP CRS <b>069°</b>	Rwy Ldg TDZE Apt Elev	<b>6001</b> <b>1061</b> <b>1062</b>
--	------------------------	-----------------------------	---

# RNAV (GPS) RWY 7

GWINNETT COUNTY/BRISCOE FLD (LZU)

RNP APCH.		MISSED APPROACH: Climb to 3000 direct JOKLI and hold.		
▼ ▲ Rwy 7 helicopter visibility reduction below 3/4 NA.				

ATIS <b>132.275</b>	ATLANTA APP CON <b>126.975 239.275</b>	<b>GWINNETT TOWER ★</b> <b>124.1 (CTAF) 0</b>	GND CON <b>121.8</b>	UNICOM <b>123.05</b>
------------------------	---	--	-------------------------	-------------------------



SE-4, 11 JUN 2026 to 09 JUL 2026

SE-4, 11 JUN 2026 to 09 JUL 2026

ELEV 1062	TDZE 1061			
CATEGORY	A	B	C	D
LP MDA	1520-1	459 (500-1)	1520-1 3/8	459 (500-1 1/8)
LNNAV MDA	1580-1	519 (600-1)	1580-1 3/8	519 (600-1 1/8)
CIRCLING	1640-1	578 (600-1)	1680-1 3/4 618 (700-1 3/4)	1700-2 638 (700-2)
HIRL Rwy 7-25 0				