

WAAS CH 45720 W27A	APP CRS 272°	Rwy Ldg TDZE Apt Elev	5004 903 905
--	------------------------	-----------------------------	---

RNAV (GPS) RWY 27L

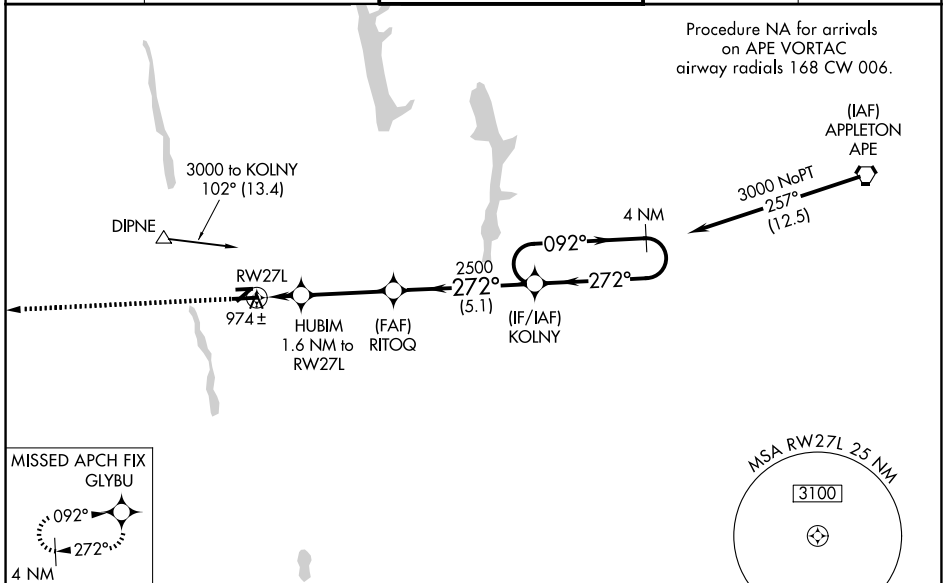
OHIO STATE UNIVERSITY (OSU)

RNP APCH.

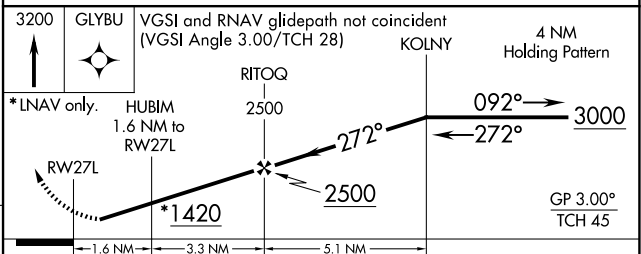
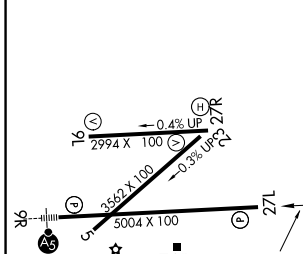
⚠ Baro-VNAV NA when using John Glenn Columbus Intl altimeter setting. For uncompensated Baro-VNAV systems, LNAV/VNAV NA below -16°C or above 38°C. When local altimeter setting not received, use John Glenn Columbus Intl altimeter setting; increase LPV DA to 1178 feet; increase LNAV/VNAV DA to 1224 feet and all visibilities 1/8 SM; increase all MDAs 40 feet and visibility LNAV Cat C 1/8 SM and Cat D 1/4 SM, and Circling Cat D 1/4 SM. Circling Rwy 23 NA at night. Rwy 27L helicopter visibility reduction below 3/4 SM NA.

MISSED APPROACH: Climb to 3200 direct GLYBU and hold.

ATIS 121.35	COLUMBUS APP CON 125.95 317.775	STATE TOWER ★ 118.8 (CTAF) 254.325	GND CON 121.7	UNICOM 122.95
-----------------------	---	--	-------------------------	-------------------------



ELEV 905	D	TDZE 903
----------	----------	----------



CATEGORY	A	B	C	D
LPV DA		1153-1	250 (300-1)	
LNAV/VNAV DA		1199-1	296 (300-1)	
LNAV MDA	1280-1	377 (400-1)	1280-1 1/8	377 (400-1 1/8)
CIRCLING	1380-1	1420-1	1420-1 1/2	1680-2 1/2
	475 (500-1)	515 (600-1)	515 (600-1 1/2)	775 (800-2 1/2)

REIL Rwy 27L
HIRL Rwy 9R-27L
MIRL Rwy 9L-27R

EC-2, 11 JUN 2026 to 09 JUL 2026

EC-2, 11 JUN 2026 to 09 JUL 2026