

WAAS CH 86420 W09A	APP CRS 092°	Rwy Ldg TDZE Apt Elev	5004 905 905
--	------------------------	-----------------------------	---

RNAV (GPS) RWY 9R

OHIO STATE UNIVERSITY (OSU)

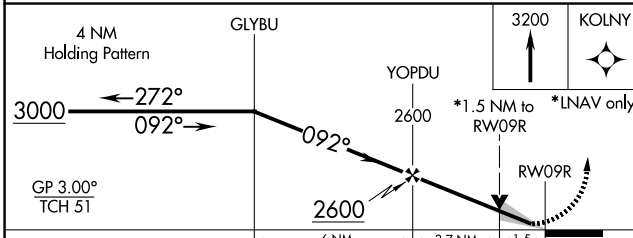
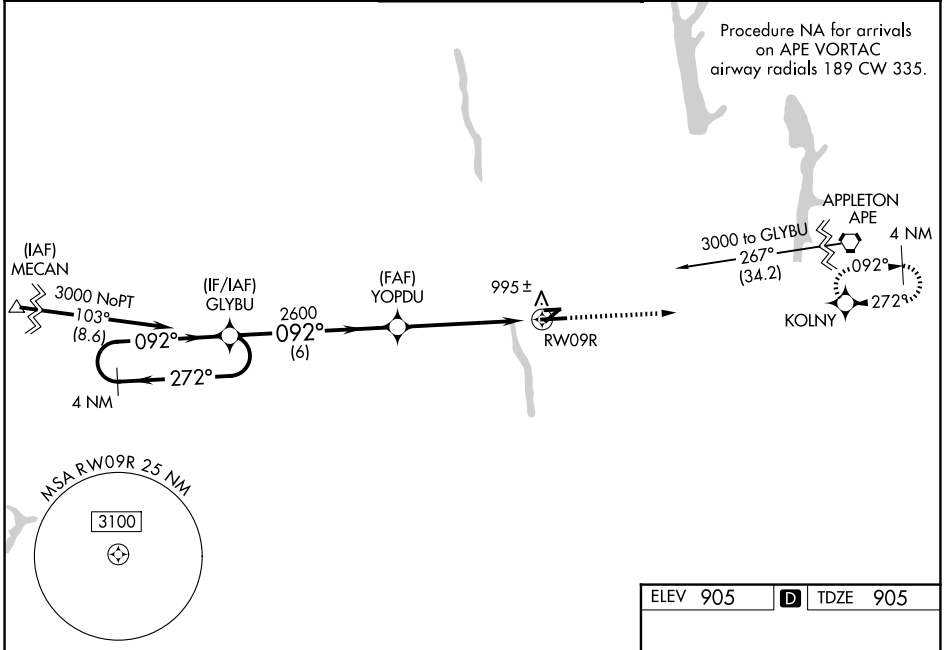
RNP APCH.

▼ Baro-VNAV NA when using John Glenn Columbus Intl altimeter setting. For uncompensated Baro-VNAV systems, LNAV/VNAV NA below -16°C or above 38°C. VDP NA with John Glenn Columbus Intl altimeter setting. When local altimeter setting not received, use John Glenn Columbus Intl altimeter setting; increase LPV DA to 1140 feet; increase LNAV/VNAV DA to 1227 feet; increase all MDAs 40 feet and LNAV visibility Cat C 1/8 SM, Cat D 1/4 SM and Circling Cat D 1/4 SM. Circling Rwy 23 NA at night. For inop ALS, increase LNAV/VNAV visibility all Cats to 1/2 SM.

▲ MALSR

MISSED APPROACH: Climb to 3200 direct KOLNY and hold.

ATIS 121.35	COLUMBUS APP CON 125.95 317.775	STATE TOWER ★ 118.8 (CTAF) 254.325	GND CON 121.7	UNICOM 122.95
-----------------------	---	--	-------------------------	-------------------------



ELEV 905	D TDZE 905
----------	-------------------

REIL Rwy 27L
HIRL Rwy 9R-27L
MRL Rwy 9L-27R

CATEGORY	A	B	C	D
LPV DA		1105-1/2	200 (200-1/2)	
LNAV/VNAV DA		1192-1/2	287 (300-1/2)	
LNAV MDA	1420-1/2	515 (600-1/2)	1420-1	515 (600-1)
CIRCLING	1420-1	515 (600-1)	1420-1 1/2 515 (600-1 1/2)	1680-2 1/2 775 (800-2 1/2)

EC-2, 11 JUN 2026 to 09 JUL 2026

EC-2, 11 JUN 2026 to 09 JUL 2026