

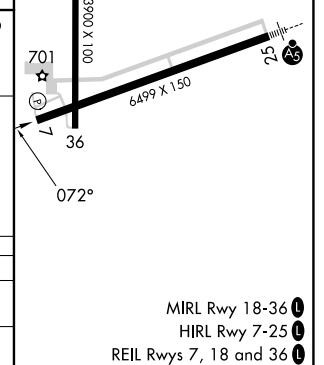
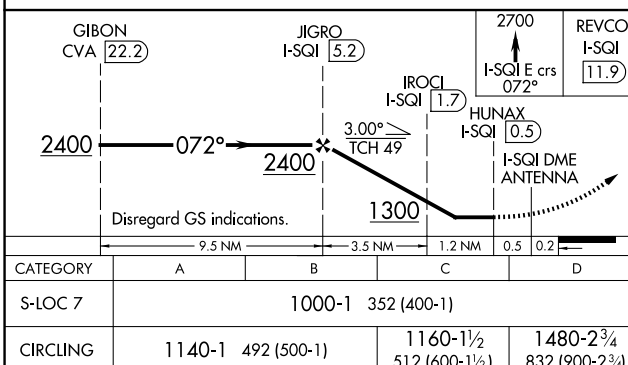
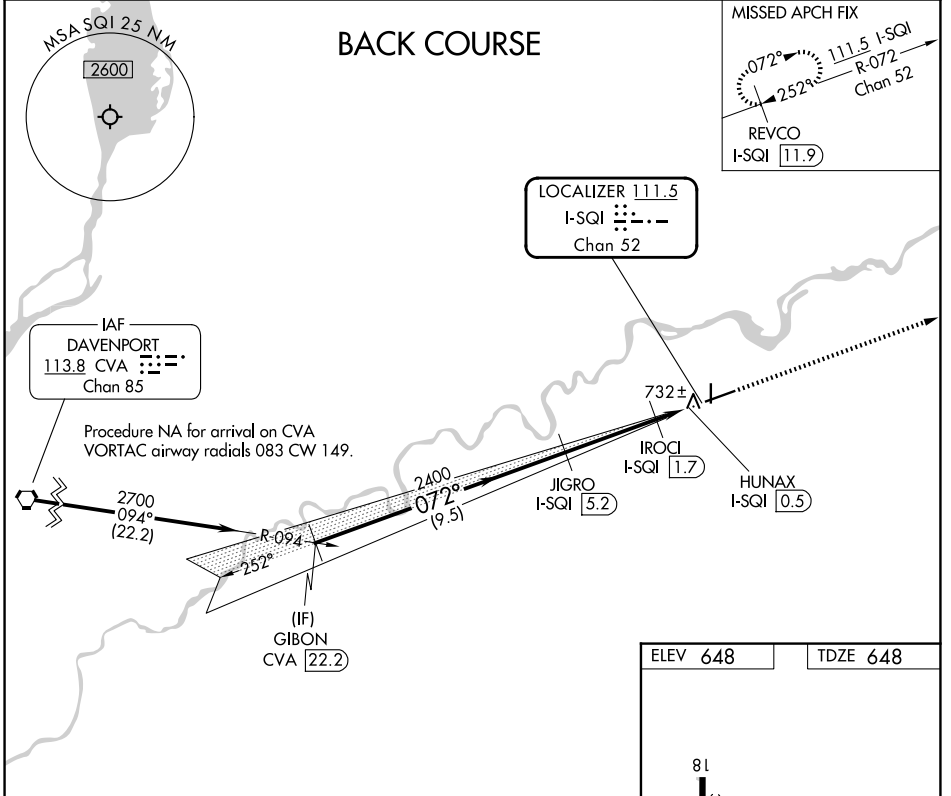
LOC/DME I-SQI <b>111.5</b> Chan <b>52</b>	APP CRS <b>072°</b>	Rwy Ldg TDZE <b>648</b> Apt Elev <b>648</b>
---	------------------------	---

# LOC BC RWY 7

WHITESIDE COUNTY/JOS H BITTORF FLD (SQI)

DME required.	MISSED APPROACH: Climb to 2700 on I-SQI localizer east course 072° to REVCO/I-SQI 11.9 DME and hold.
▼ ▲ NA	Rwy 7 helicopter visibility reduction below 3/4 SM NA.

AWOS-3PT <b>119.175</b>	ROCKFORD APP CON <b>126.0 327.0</b>	CLNC DEL <b>128.0</b>	UNICOM <b>123.0 (CTAF) 0</b>
----------------------------	--	--------------------------	---------------------------------



STERLING/ROCKFALLS, ILLINOIS Amdt 7A 12JUN25	WHITESIDE COUNTY/JOS H BITTORF FLD (SQI) <b>LOC BC RWY 7</b>
---	---

EC-3, 11 JUN 2026 to 09 JUL 2026

EC-3, 11 JUN 2026 to 09 JUL 2026