

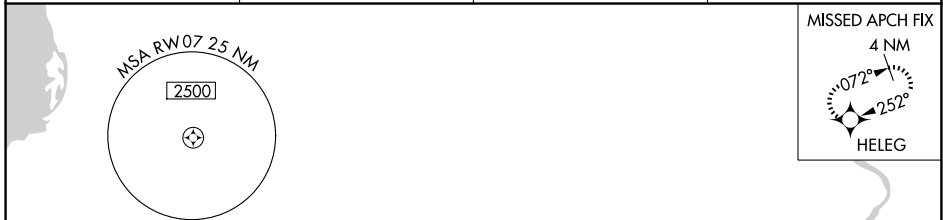
APP CRS	Rwy Ldg	<b>6499</b>
<b>072°</b>	TDZE	<b>648</b>
	Apt Elev	<b>648</b>

# RNAV (GPS) RWY 7

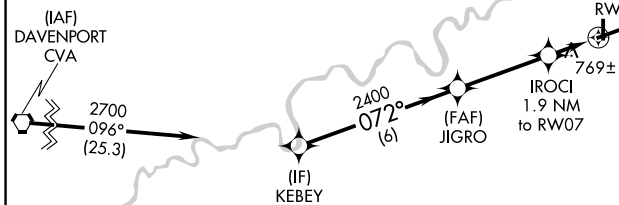
WHITESIDE COUNTY/JOS H BITTORF FLD (SQI)

RNP APCH -GPS.		MISSED APPROACH: Climb to 2700 direct HELEG and hold.	
Rwy 7 helicopter visibility reduction below 3/4 SM NA.			

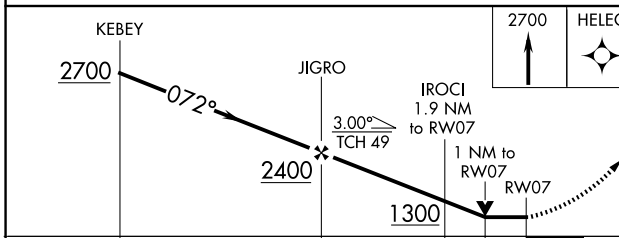
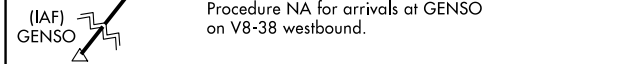
AWOS-3PT <b>119.175</b>	ROCKFORD APP CON <b>126.0 327.0</b>	CLNC DEL <b>128.0</b>	UNICOM <b>123.0 (CTAF) 0</b>
----------------------------	--	--------------------------	---------------------------------



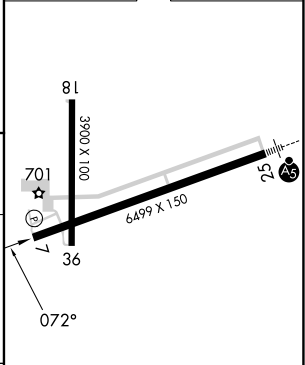
Procedure NA for arrival on CVA VORTAC airway radial 083 westbound.



Procedure NA for arrivals at GENSO on V8-38 westbound.



ELEV 648	TDZE 648
----------	----------



CATEGORY	A	B	C	D
LNVA MDA	1020-1 372 (400-1)			
CIRCLING	1140-1	492 (500-1)	1160-1½ 512 (600-1½)	1480-2¾ 832 (900-2¾)

HIRL Rwy 7-25  
MIRL Rwy 18-36  
REIL Rws 7, 18 and 36

EC-3, 11 JUN 2026 to 09 JUL 2026

EC-3, 11 JUN 2026 to 09 JUL 2026