

WAAS CH 40030 W26A	APP CRS 256°	Rwy Ldg TDZE Apt Elev	2810 523 523
--	------------------------	-----------------------------	---

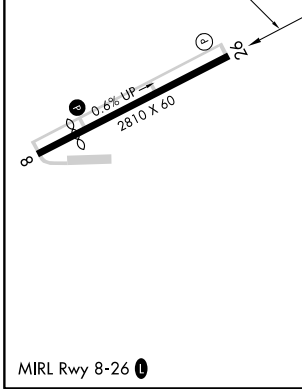
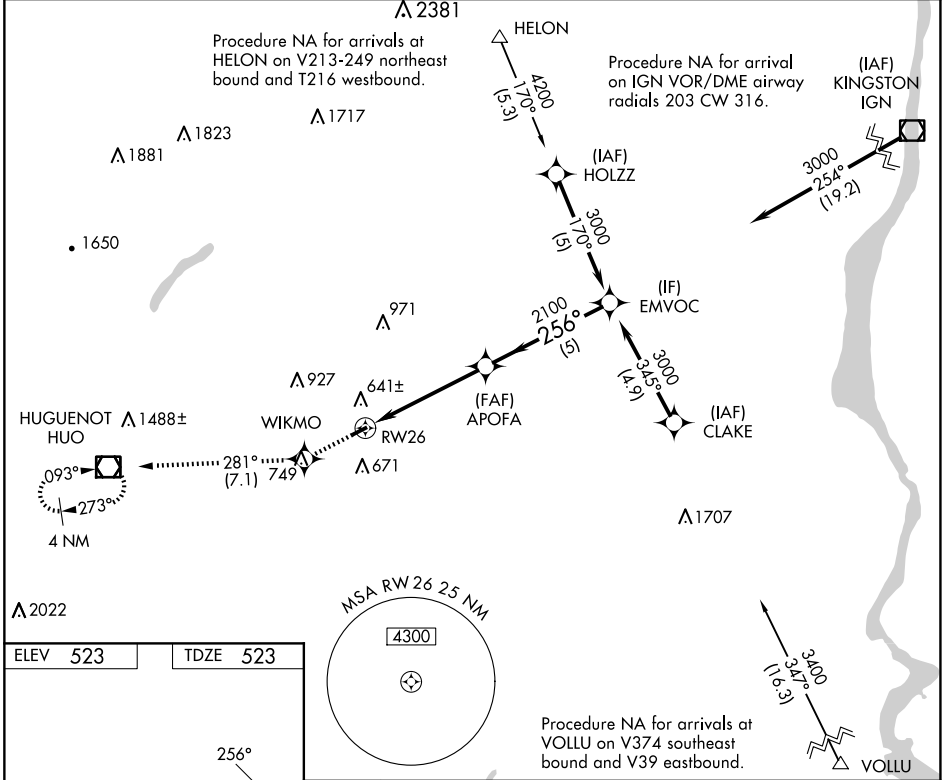
RNAV (GPS) RWY 26

RANDALL (Ø6N)

RNP APCH. Procedure NA at night. Rwy 26 helicopter visibility reduction below 1 SM NA. Use Newburgh altimeter setting; when not received, use Montgomery altimeter setting.

MISSED APPROACH: Climb to 3500 direct WIKMO and on track 281° to HVO VOR/DME and hold, continue climb-in-hold to 3500.

NEW YORK APP CON 132.75 363.1	UNICOM 122.8 (CTAF) 0
---	---------------------------------



ELEV 523	TDZE 523	Visual Segment - Obstacles.		
3500	WIKMO	tr 281°	HVO	
RWY 26		APOFA	EMVOC	
4.9 NM		2100	3000	
5 NM				
CATEGORY	A	B	C	D
LP MDA	1020-1 497 (500-1)		NA	
LNAV MDA	1060-1 537 (600-1)		NA	
CIRCLING	1080-1 557 (600-1)		NA	

NE-2, 11 JUN 2026 to 09 JUL 2026

NE-2, 11 JUN 2026 to 09 JUL 2026