

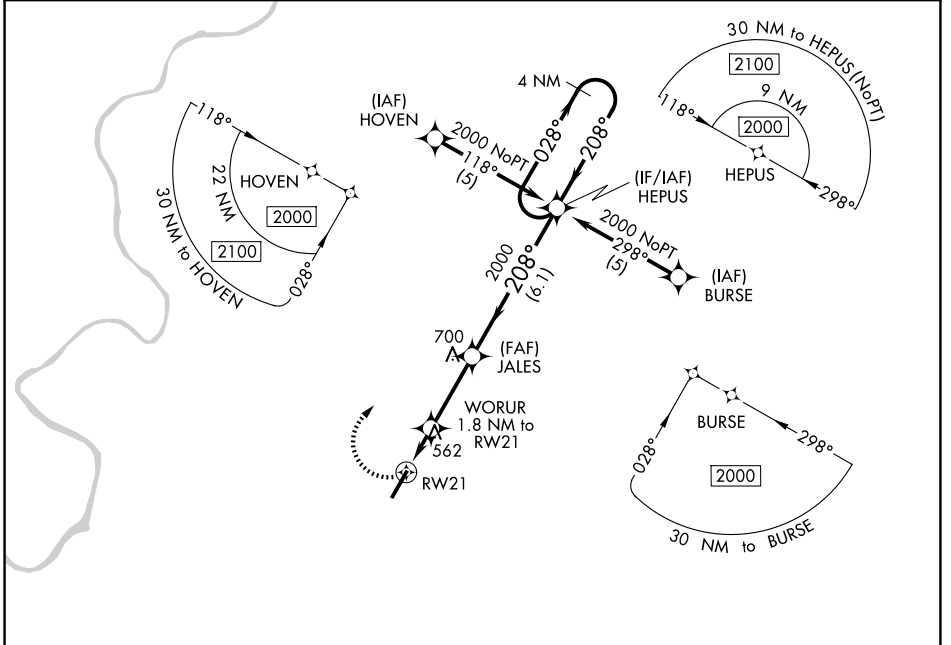
APP CRS	Rwy Ldg	6028
208°	TDZE	419
	Apt Elev	419

RNAV (GPS) RWY 21
MONROE COUNTY AEROPLEX (MVC)

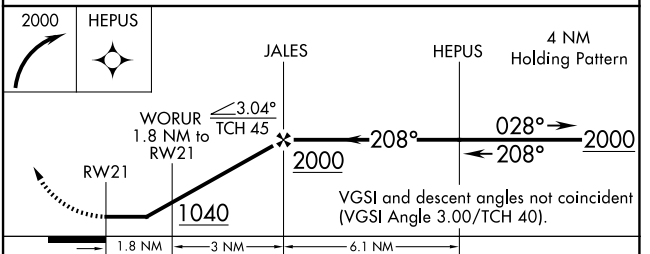
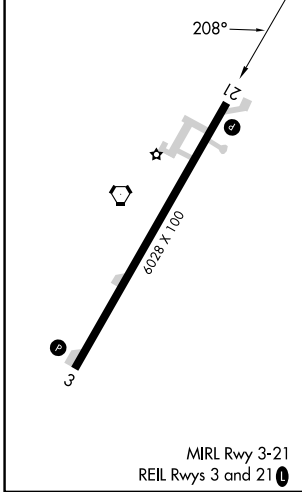
RNP APCH.
 ▼ Obtain local altimeter setting on CTAF; when not received, use Evergreen Rgnl/Middleton Fld altimeter setting. Procedure NA at night. Rwy 21 helicopter visibility reduction below 1 SM NA.
 ▲ NA

MISSED APPROACH:
 Climbing right turn to 2000 direct HEPUS and hold.

ATLANTA CENTER 118.55 267.9	UNICOM 123.0 (CTAF) 0
---------------------------------------	---------------------------------



ELEV 419	TDZE 419
----------	----------



CATEGORY	A	B	C	D
LNAV/MDA	880-1	461 (500-1)	880-1¼ 461 (500-1¼)	880-1½ 461 (500-1½)
CIRCLING	880-1 461 (500-1)	920-1 501 (600-1)	920-1½ 501 (600-1½)	1120-2¼ 701 (800-2¼)
EVERGREEN RGNL/MIDDLETON FLD ALTIMETER SETTING MINIMUMS				
LNAV/MDA	940-1	521 (600-1)	940-1½ 521 (600-1½)	940-1¾ 521 (600-1¾)
CIRCLING	940-1 521 (600-1)	980-1 561 (600-1)	980-1½ 561 (600-1½)	1180-2½ 761 (800-2½)

SE-4, 11 JUN 2026 to 09 JUL 2026

SE-4, 11 JUN 2026 to 09 JUL 2026