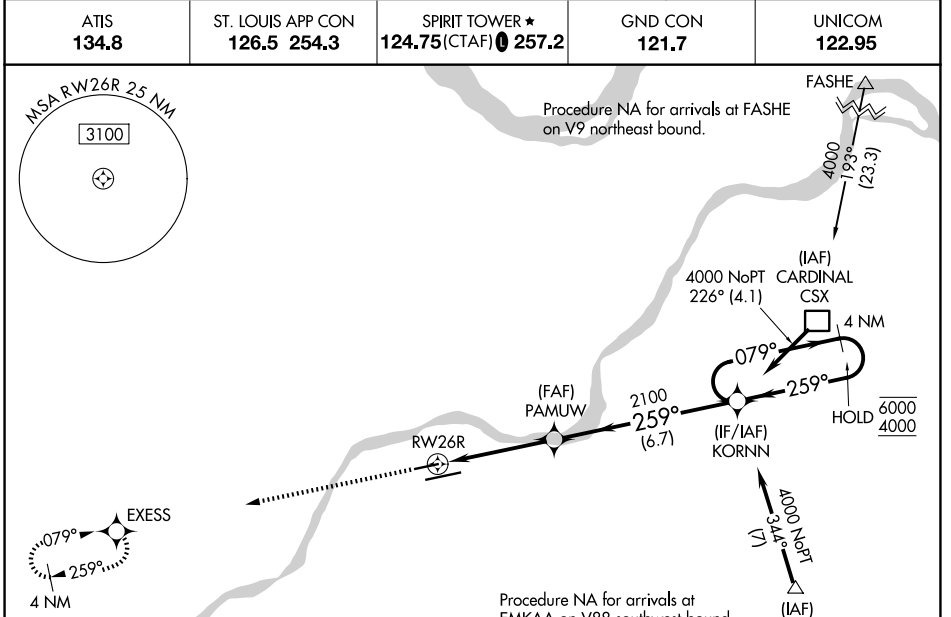


WAAS CH <b>97414</b> <b>W26A</b>	APP CRS <b>259°</b>	Rwy Ldg TDZE <b>463</b> Apt Elev <b>463</b>
--	------------------------	---

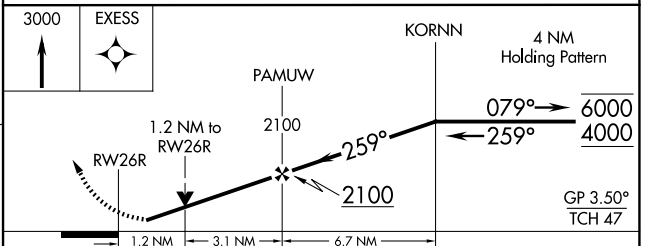
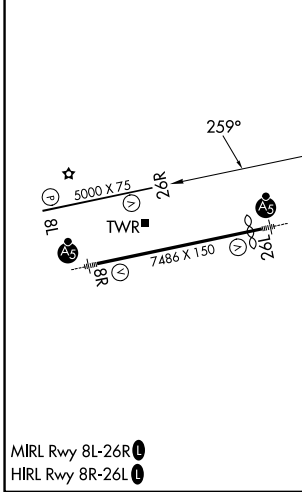
# RNAV (GPS) RWY 26R

SPIRIT OF ST LOUIS (SUS)

RNP APCH - GPS.	<p><b>▽</b> Baro-VNAV and VDP NA when using St Louis Lambert Intl altimeter setting.  <b>⚠</b> Rwy 26R helicopter visibility reduction below 3/4 SM NA. For uncompensated Baro-VNAV systems, LNAV/VNAV NA below -18°C or above 54°C. When local altimeter setting not received, use St Louis Lambert Intl altimeter setting: increase LPV DA to 798 feet and all visibilities 1/2 SM, increase LNAV/VNAV DA to 823 feet and all visibilities 1/2 SM; increase all MDAs 60 feet.</p>	<p>MISSED APPROACH: Climb to 3000 direct EXCESS and hold.</p>
<p>ATIS <b>134.8</b></p> <p>ST. LOUIS APP CON <b>126.5 254.3</b></p> <p>SPIRIT TOWER ★ <b>124.75(CTAF) 0 257.2</b></p> <p>GND CON <b>121.7</b></p> <p>UNICOM <b>122.95</b></p>		



ELEV <b>463</b>	<b>D</b>	TDZE <b>463</b>
-----------------	----------	-----------------



CATEGORY	A	B	C	D
LPV DA	755-7/8	292 (300-7/8)		NA
LNAV/VNAV DA	780-7/8	317 (400-7/8)		NA
LNAV MDA	940-1	477 (500-1)		NA
CIRCLING	1100-1 637 (700-1)	1140-1 677 (700-1)		NA

NC-3, 11 JUN 2026 to 09 JUL 2026

NC-3, 11 JUN 2026 to 09 JUL 2026