

WAAS CH 61114 W08B	APP CRS 079°	Rwy Ldg TDZE Apt Elev	7225 462 463
--	------------------------	-----------------------------	---

RNAV (GPS) RWY 8R

SPRIT OF ST LOUIS (SUS)

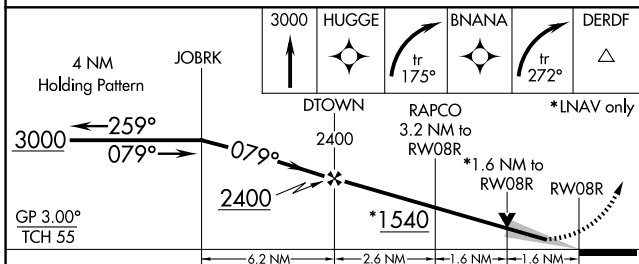
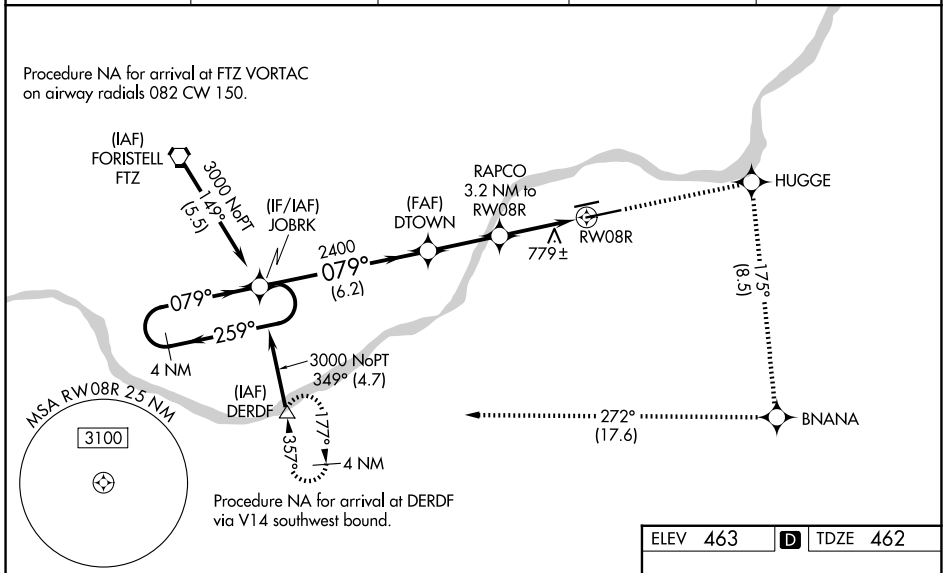
RNP APCH - GPS.

⚠ For uncompensated Baro-VNAV systems, LNAV/VNAV NA below -15°C or above 54°C. Baro-VNAV and VDP NA when using STL altimeter setting. When local altimeter setting not received, use STL altimeter setting and increase LPV DA to 719 feet, increase LNAV/VNAV DA to 1186 feet, increase all MDA 60 feet, increase visibility LNAV/VNAV all Cats and LNAV Cats C/D 1/8 SM, and Circling Cat C 1/4 SM. For inop ALS, increase LNAV/VNAV all Cats visibility to 2 1/2 SM and LNAV Cats C/D visibility to 1 5/8 SM. # RVR 1800 authorized with use of FD or AP or HUD to DA, NA when using STL altimeter setting.

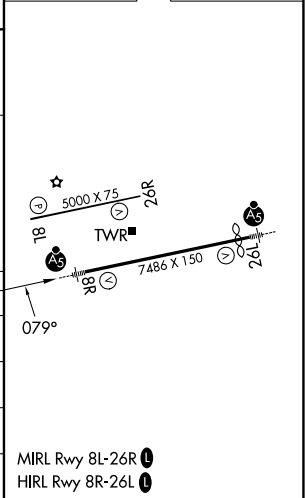
MALSR

MISSED APPROACH:
Climb to 3000 direct HUGGE and right turn on track 175° to BNANA and right turn on track 272° to DERDF and hold.

ATIS 134.8	ST. LOUIS APP CON 126.5 254.3	SPIRIT TOWER ★ 124.75 (CTAF) 257.2	GND CON 121.7	UNICOM 122.95
----------------------	---	--	-------------------------	-------------------------



ELEV 463	D TDZE 462
----------	-------------------



CATEGORY	A	B	C	D
LPV DA#		662/24	200 (200-1/2)	
LNAV/VNAV DA		1129-1 7/8	667 (700-1 7/8)	
LNAV MDA	1040/24	578 (600-1/2)	1040-1 1/4	578 (600-1 1/4)
CIRCLING	1100-1 637 (700-1)	1140-1 677 (700-1)	1180-2 717 (800-2)	1360-3 897 (900-3)

NC-3, 11 JUN 2026 to 09 JUL 2026

NC-3, 11 JUN 2026 to 09 JUL 2026