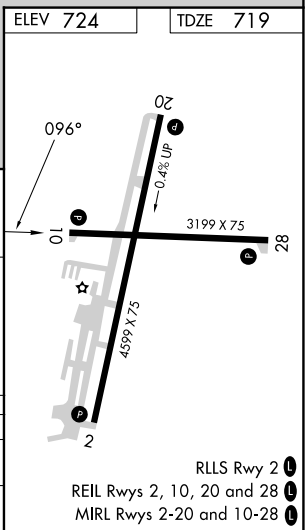
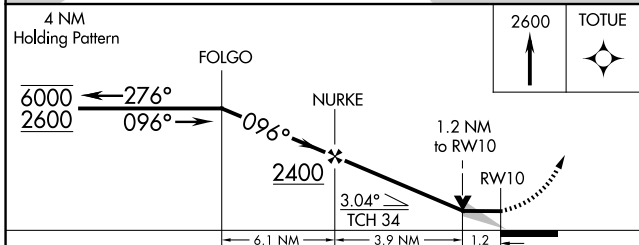
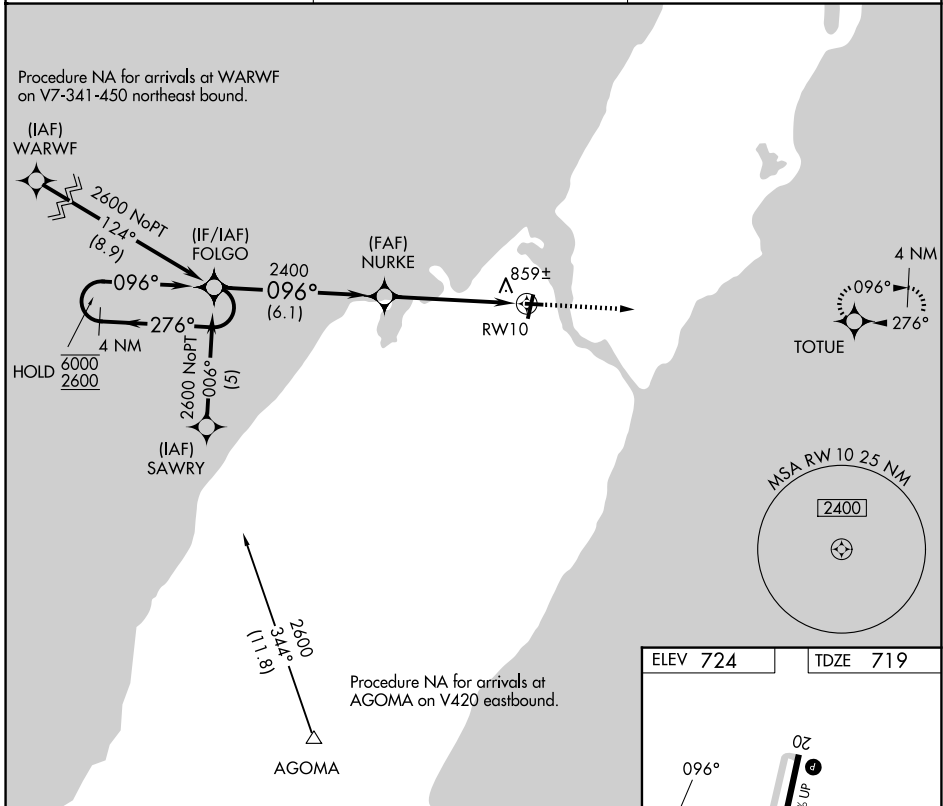


APP CRS	Rwy Ldg	<b>3199</b>
<b>096°</b>	TDZE	<b>719</b>
	Apt Elev	<b>724</b>

# RNAV (GPS) RWY 10

DOOR COUNTY CHERRYLAND (SUE)

RNP APCH.		MISSED APPROACH: Climb to 2600 direct TOTUE and hold.
AWOS-3PT <b>128.325</b>	GREEN BAY APP CON ★ <b>119.25 338.2</b>	UNICOM <b>122.7 (CTAF)</b>



CATEGORY	A	B	C	D
RNAV MDA	1120-1 401 (400-1)		1120-1½ 401 (400-1½)	NA
CIRCLING	1280-1 556 (600-1)		1280-1½ 556 (600-1½)	NA

RLLS Rwy 2

REIL Rws 2, 10, 20 and 28

MIRL Rws 2-20 and 10-28

EC-3, 11 JUN 2026 to 09 JUL 2026

EC-3, 11 JUN 2026 to 09 JUL 2026