

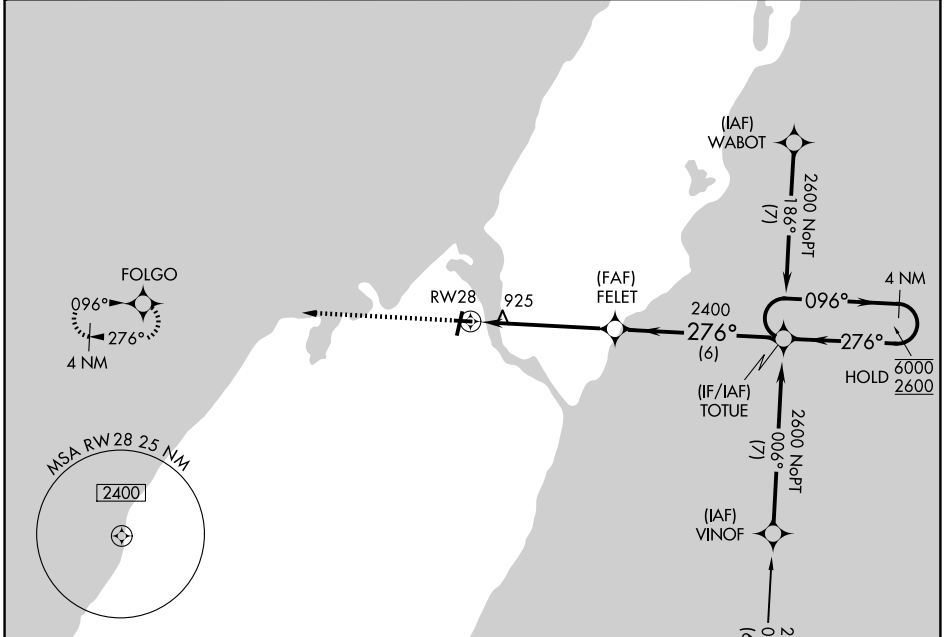
APP CRS	Rwy Ldg	3199
276°	TDZE	719
	Apt Elev	724

RNAV (GPS) RWY 28

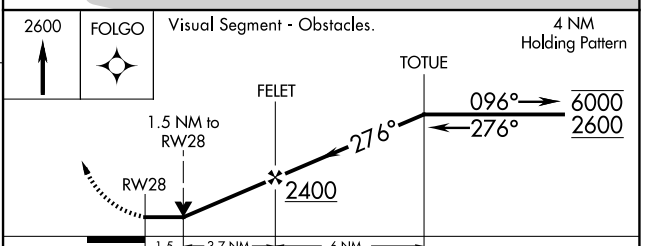
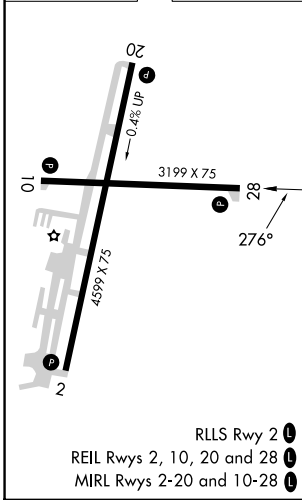
DOOR COUNTY CHERRYLAND (SUE)

RNP APCH - GPS.	MISSED APPROACH: Climb to 2600 direct FOLGO and hold.
▼ ▲ Rwy 28 helicopter visibility reduction below 3/4 SM NA.	

AWOS-3PT 128.325	GREEN BAY APP CON ★ 119.25 338.2	UNICOM 122.7 (CTAF) 0
----------------------------	--	---------------------------------



ELEV 724	TDZE 719
----------	----------



CATEGORY	A	B	C	D
LNAV MDA	1240-1	521 (600-1)	1240-1½ 521 (600-1½)	NA
CIRCLING	1280-1	556 (600-1)	1280-1½ 556 (600-1½)	NA

EC-3, 11 JUN 2026 to 09 JUL 2026

EC-3, 11 JUN 2026 to 09 JUL 2026