

WAAS CH 90400 W03A	APP CRS 025°	Rwy Ldg TDZE Apt Elev	5003 1214 1216
--	------------------------	-----------------------------	---

RNAV (GPS) RWY 3

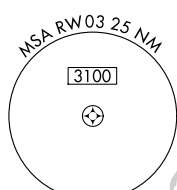
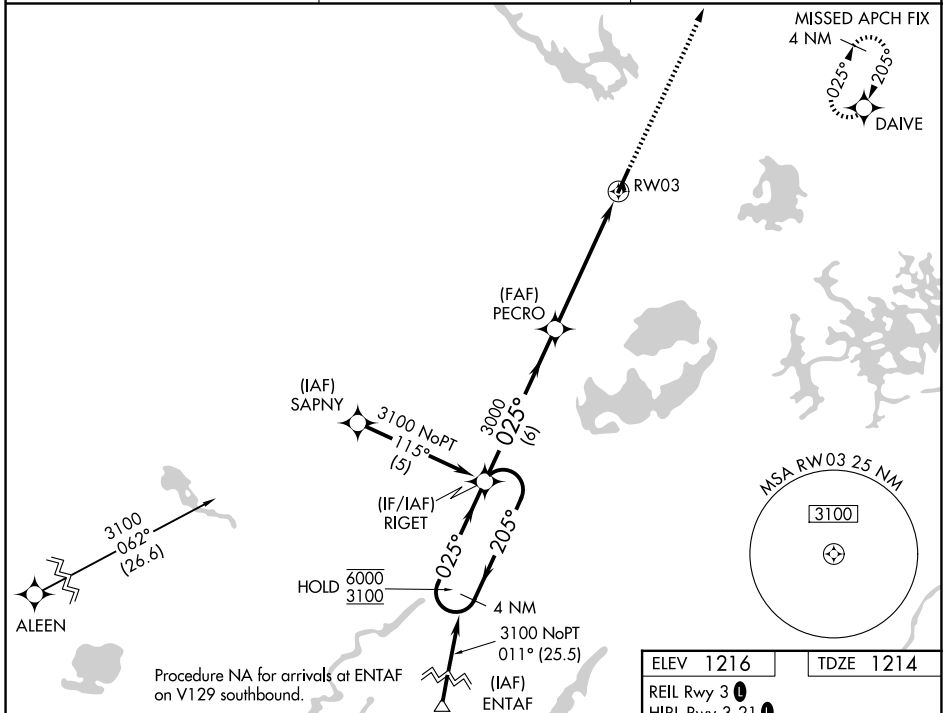
SAWYER COUNTY (HYR)

RNP APCH - GPS.

⚠ Circling NA to Rwy 16 and 34. Rwy 3 helicopter visibility reduction below 3/4 SM NA. For uncompensated Baro-VNAV systems, LNAV/VNAV NA below -22°C or above 54°C.

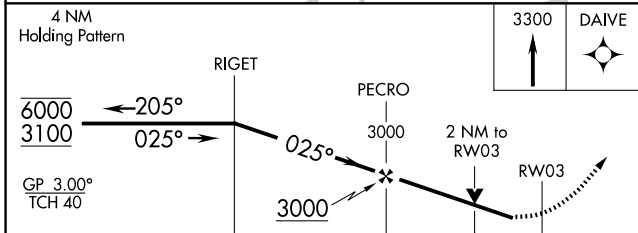
MISSED APPROACH:
Climb to 3300 direct
DAIVE and hold.

ASOS 118.4	MINNEAPOLIS CENTER 126.45 276.4	UNICOM 122.8 (CTAF) 0
----------------------	---	---------------------------------

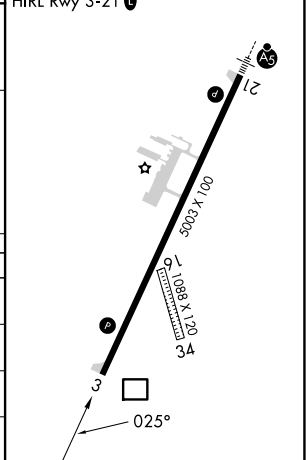


Procedure NA for arrivals at ENTAF on V129 southbound.

ELEV 1216	TDZE 1214
REIL Rwy 3 0	
HIRL Rwy 3-21 0	



CATEGORY	A	B	C	D
LPV DA		1514-7/8	300 (300-7/8)	
LNAV/VNAV DA		1880-17/8	666 (700-17/8)	
LNAV MDA	1880-1	666 (700-1)	1880-17/8	666 (700-17/8)
CIRCLING	1880-1 664 (700-1)	2060-1 1/4 844 (900-1 1/4)	2120-2 3/4 904 (1000-2 3/4)	2120-3 904 (1000-3)



EC-3, 11 JUN 2026 to 09 JUL 2026

EC-3, 11 JUN 2026 to 09 JUL 2026