

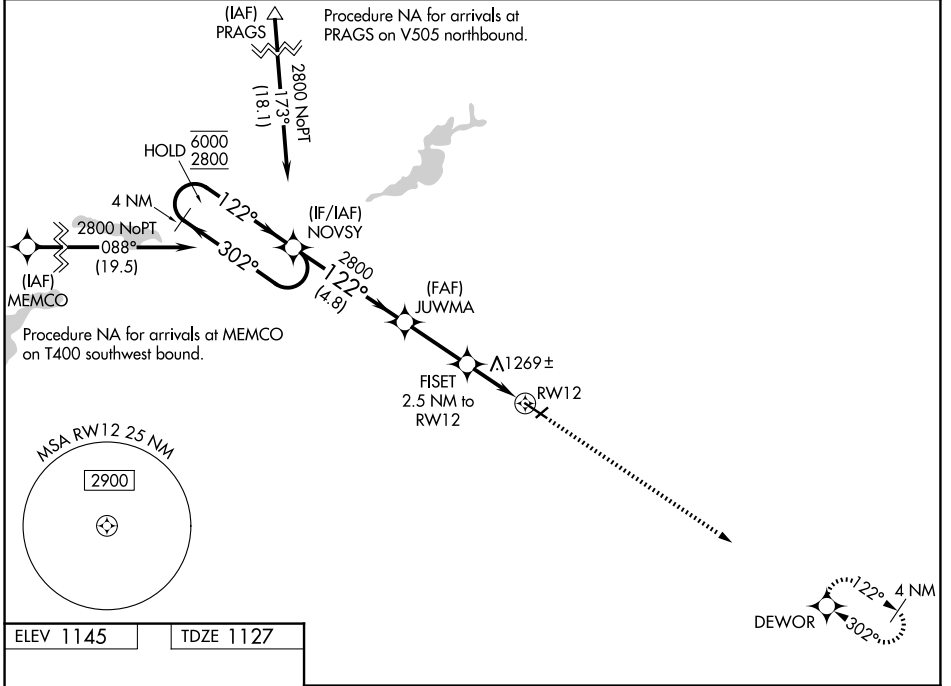
WAAS CH <b>82627</b> <b>W12A</b>	APP CRS <b>122°</b>	Rwy Ldg TDZE Apt Elev	<b>5500</b> <b>1127</b> <b>1145</b>
--	------------------------	-----------------------------	---

# RNAV (GPS) RWY 12

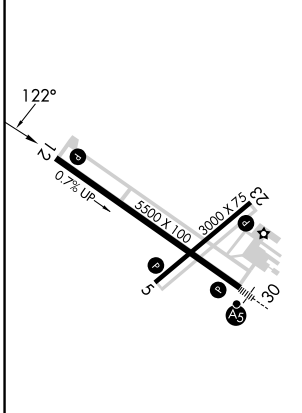
OWATONNA DEGNER RGNL (OWA)

RNP APCH - GPS.	MISSED APPROACH: Climb to 2900 direct DEWOR and hold.
<p><b>▼</b> Rwy 12 helicopter visibility reduction below 3/4 SM NA. For uncompensated Baro-VNAV systems, LNAV/VNAV NA below -17°C or above 54°C.</p>	

AWOS-3 <b>128.325</b>	ROCHESTER APP CON ★ <b>119.8 251.125</b>	UNICOM <b>122.7 (CTAF)</b>
--------------------------	---	-------------------------------



ELEV 1145	TDZE 1127
-----------	-----------



	4 NM Holding Pattern	NOVSY	JUWMA	FISET 2.5 NM to RW12	2900 DEWOR
	6000 ← 302°	2800 → 122°	2800 → 122°	1940	
	GP 3.00°	TCH 40		1.2 NM to RW12	
		4.8 NM	2.7 NM	1.3 NM	1.2 NM
CATEGORY	A	B	C	D	
LPV DA		1420-7/8	293 (300-7/8)		
LNAV/VNAV DA		1400-7/8	273 (300-7/8)		
LNAV MDA	1520-1	393 (400-1)	1520-1 1/8	393 (400-1 1/8)	
CIRCLING	1640-1 495 (500-1)	1700-1 555 (600-1)	1720-1 1/2 575 (600-1 1/2)	1880-2 1/4 735 (800-2 1/4)	

MIRL Rwy 5-23  
REIL Rwy 5, 12, and 23  
HIRL Rwy 12-30

NC-1, 11 JUN 2026 to 09 JUL 2026

NC-1, 11 JUN 2026 to 09 JUL 2026