

WAAS CH <b>86627</b> <b>W30A</b>	APP CRS <b>302°</b>	Rwy Ldg TDZE Apt Elev	<b>5500</b> <b>1145</b> <b>1145</b>
--	------------------------	-----------------------------	---

# RNAV (GPS) RWY 30

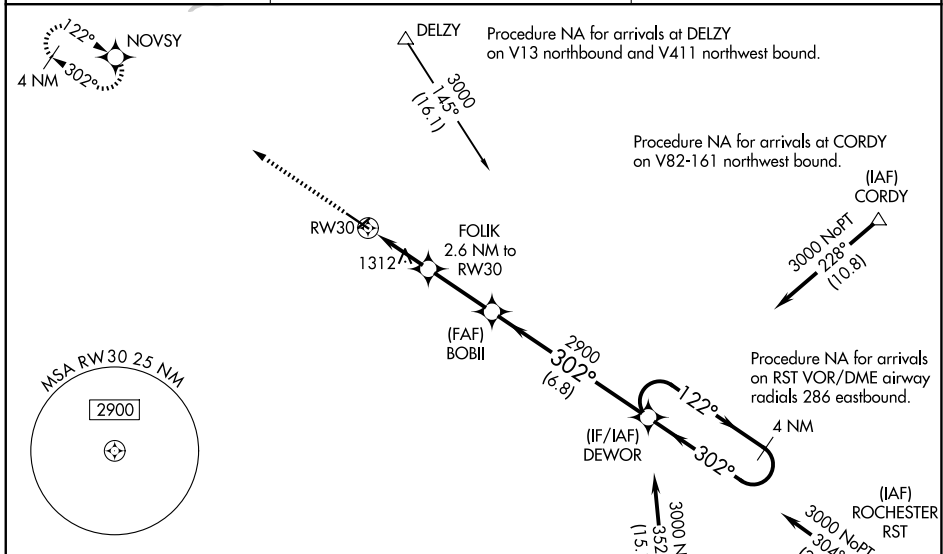
OWATONNA DEGNER RGNL (OWA)

**⚠** For uncompensated Baro-VNAV systems, LNAV/VNAV NA below -17°C (2°F) or above 54°C (130°F). DME/DME/RNP-0.3 NA. When local altimeter setting not received, use Fairbault altimeter setting and increase all DA 41 feet and all MDA 60 feet. Increase LNAV/VNAV all Cats visibility to 1½ mile, increase LNAV Cats C/D visibility to 1 mile, Cat C Circling visibility to 1¾ mile and Cat D visibility to 2½ mile. VDP and Baro-VNAV NA when using Fairbault altimeter setting. For inop MALSR, when using Fairbault altimeter setting, increase LNAV/VNAV all Cats visibility to 1½ mile, LNAV Cats C/D visibility to 1¾ mile.

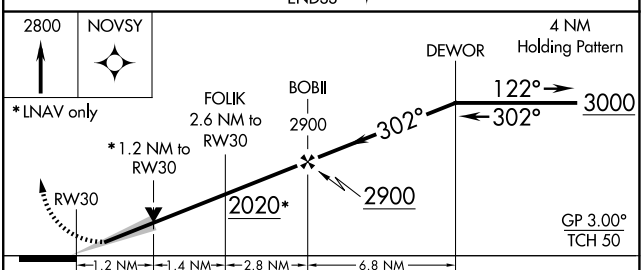
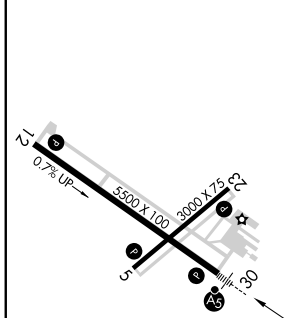


**MISSED APPROACH:**  
Climb to 2800 direct  
NOVSY and hold.

AWOS-3 <b>128.325</b>	ROCHESTER APP CON ★ <b>119.8 251.125</b>	UNICOM <b>122.7 (CTAF) ①</b>
--------------------------	---	---------------------------------



ELEV 1145	TDZE 1145
-----------	-----------



CATEGORY	A	B	C	D
LPV DA	1345-½		200 (200-½)	
LNAV/VNAV DA	1567-1		422 (500-1)	
LNAV MDA	1580-½	435 (500-½)	1580-¾	435 (500-¾)
CIRCLING	1640-1	1700-1	1720-1½	1880-2¼
	495 (500-1)	555 (600-1)	575 (600-1½)	735 (800-2¼)

MIRL Rwy 5-23 ①  
REIL Rwy 5, 12 and 23 ①  
HIRL Rwy 12-30 ①

NC-1, 11 JUN 2026 to 09 JUL 2026

NC-1, 11 JUN 2026 to 09 JUL 2026