

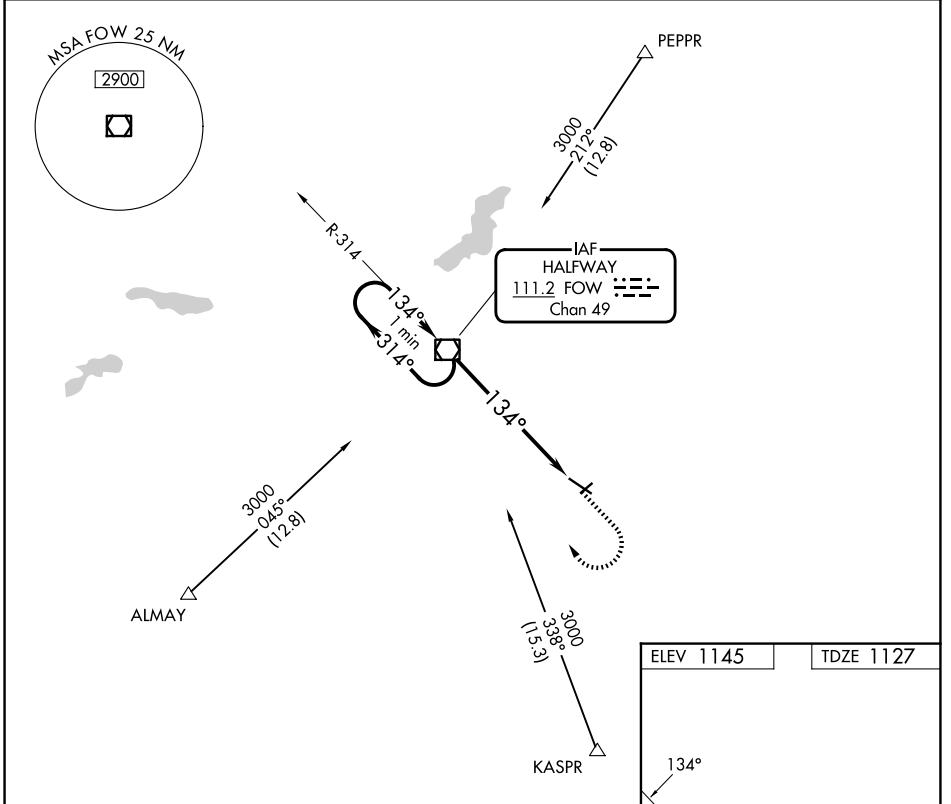
VOR/DME FOW	APP CRS	Rwy Ldg	5500
111.2	134°	TDZE	1127
Chan 49		Apt Elev	1145

# VOR RWY 12

OWATONNA DEGNER RGNL (OWA)

<p><b>▼</b></p> <p><b>▲ NA</b></p>	<p>MISSED APPROACH Climb to 2000 then climbing right turn to 3000 direct FOW VOR/DME and hold.</p>
------------------------------------	--

<p>AWOS-3</p> <p><b>128.325</b></p>	<p>ROCHESTER APP CON *</p> <p><b>119.8 251.125</b></p>	<p>UNICOM</p> <p><b>122.7 (CTAF) 0</b></p>
-------------------------------------	--	--



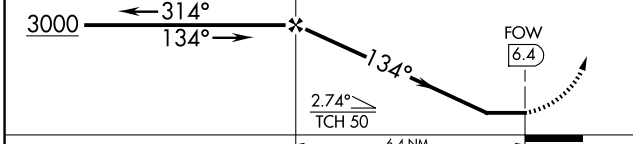
VGSI and descent angles not coincident (VGSI Angle 3.00/TCH 40).

One Minute Holding Pattern

3000 ← 314° → 134° →

FOW VOR/DME

2000 3000 FOW



ELEV 1145	TDZE 1127
-----------	-----------

MIRL Rwy 5-23 0

REIL Rwys 5, 12, and 23 0

HIRL Rwy 12-30 0

FAF to MAP 6.4 NM

Knots	60	90	120	150	180
Min:Sec	6:24	4:16	3:12	2:34	2:08

CATEGORY	A	B	C	D
S-12	1560-1	433 (500-1)	1560-1¼ 433 (500-1¼)	1560-1½ 433 (500-1½)
CIRCLING	1640-1 495 (500-1)	1700-1 555 (600-1)	1720-1½ 575 (600-1½)	1880-2¼ 735 (800-2¼)

NC-1, 11 JUN 2026 to 09 JUL 2026

NC-1, 11 JUN 2026 to 09 JUL 2026