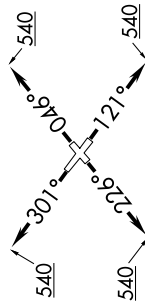


# MMALT SEVEN DEPARTURE (RNAV)

9200 TUN 60 01 92020200 11 '9-CS

RNAV 1 - DME/DME/IRU or GPS.  
RADAR required.

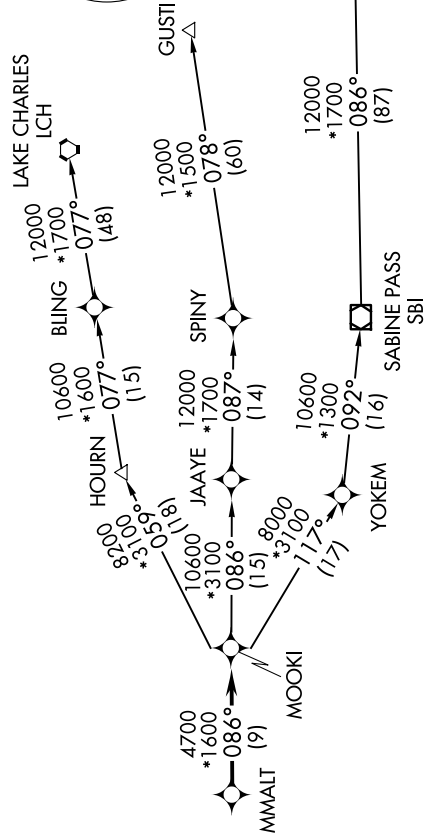
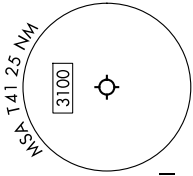
HOUSTON DEP CON  
134.45 284.0  
CLNC DEL  
125.6  
CTAF  
122.7



**TAKEOFF MINIMUMS**  
Rwys 5, 12, 23, 30: Standard with  
minimum climb of 500'/NM to 540.

NOTE: Chart not to scale.

**TOP ALTITUDE:  
ASSIGNED BY ATC**



NOTE: GUSTI and LCH Transitions ATC assigned only for aircraft departing AXH, EFD, GLS, HPY, IWS, LBX, LVJ, SGR, TME, T00, T41 and 54T.

## DEPARTURE ROUTE DESCRIPTION

- TAKEOFF RUNWAY 5:** Climb on heading 046° to 540, for RADAR vectors to MMALT, thence. . . .
- TAKEOFF RUNWAY 12:** Climb on heading 121° to 540, for RADAR vectors to MMALT, thence. . . .
- TAKEOFF RUNWAY 23:** Climb on heading 226° to 540, for RADAR vectors to MMALT, thence. . . .
- TAKEOFF RUNWAY 30:** Climb on heading 301° to 540, for RADAR vectors to MMALT, thence. . . .

. . . on track 086° to MOOKI, then on (transition). Maintain ATC assigned altitude.  
Expect filed altitude 10 minutes after departure.

- GUSTI TRANSITION (MMALT7.GUSTI)
- LAKE CHARLES TRANSITION (MMALT7.LCH)
- WHITE LAKE TRANSITION (MMALT7.LLA)

# MMALT SEVEN DEPARTURE (RNAV)