

STRYA EIGHT DEPARTURE (RNAV)

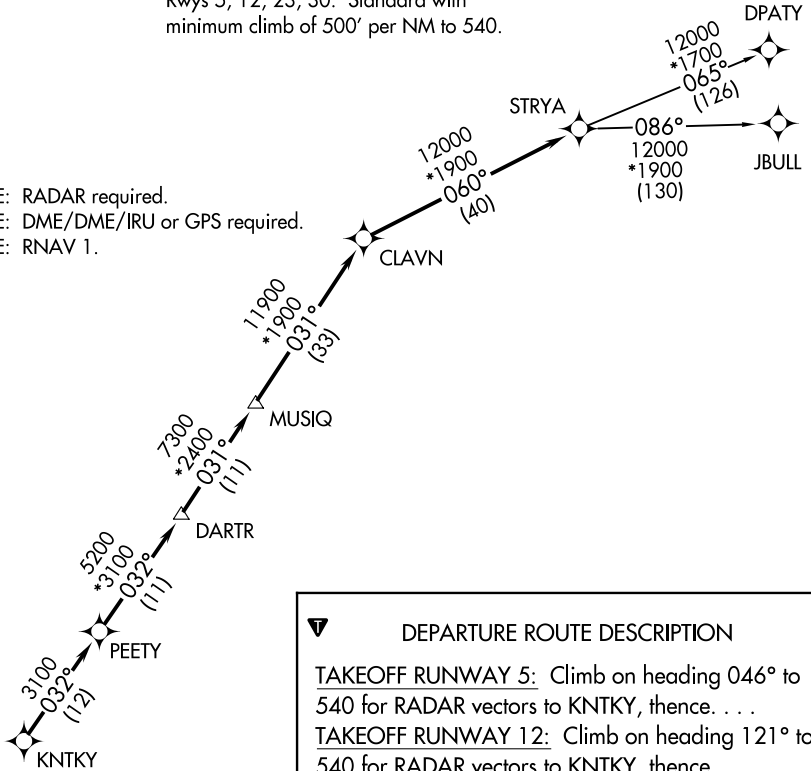
TOP ALTITUDE: ASSIGNED BY ATC

CTAF
122.7
CLNC DEL
125.6
HOUSTON DEP CON
134.45 284.0

TAKEOFF MINIMUMS

Rwys 5, 12, 23, 30: Standard with minimum climb of 500' per NM to 540.

- NOTE: RADAR required.
- NOTE: DME/DME/IRU or GPS required.
- NOTE: RNAV 1.



DEPARTURE ROUTE DESCRIPTION

TAKEOFF RUNWAY 5: Climb on heading 046° to 540 for RADAR vectors to KNTKY, then...

TAKEOFF RUNWAY 12: Climb on heading 121° to 540 for RADAR vectors to KNTKY, then...

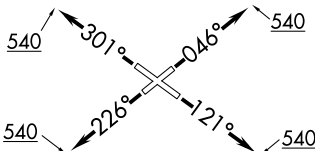
TAKEOFF RUNWAY 23: Climb on heading 226° to 540 for RADAR vectors to KNTKY, then...

TAKEOFF RUNWAY 30: Climb on heading 301° to 540 for RADAR vectors to KNTKY, then...

...on track 032° to PEETY, then on track 032° to DARTR, then on track 031° to MUSIQ, then on track 031° to CLAVN, then on track 060° to STRYA, then on (transition). Maintain ATC assigned altitude. Expect filed altitude 10 minutes after departure.

DPATY TRANSITION (STRYA8.DPATY)

JBULL TRANSITION (STRYA8.JBULL)



NOTE: Chart not to scale.

SC-5, 11 JUN 2026 to 09 JUL 2026

SC-5, 11 JUN 2026 to 09 JUL 2026

STRYA EIGHT DEPARTURE (RNAV)

(STRYA8.STRYA) 07OCT21