

WYLSN EIGHT DEPARTURE (RNAV)

CLNC DEL
125.6
CTAF
122.7
HOUSTON DEP CON
134.45 284.0

**TOP ALTITUDE:
ASSIGNED BY ATC**

NOTE: RADAR required.
NOTE: DME/DME/IRU or GPS required.
NOTE: RNAV 1.

TAKEOFF MINIMUMS

Rwys 5, 12, 23, 30: Standard with minimum climb of 500' per NM to 540.

DEPARTURE ROUTE DESCRIPTION

TAKEOFF RUNWAY 5: Climb on heading 046° to 540 for RADAR vectors to WYLSN, thence. . . .

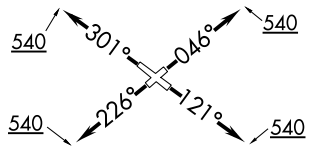
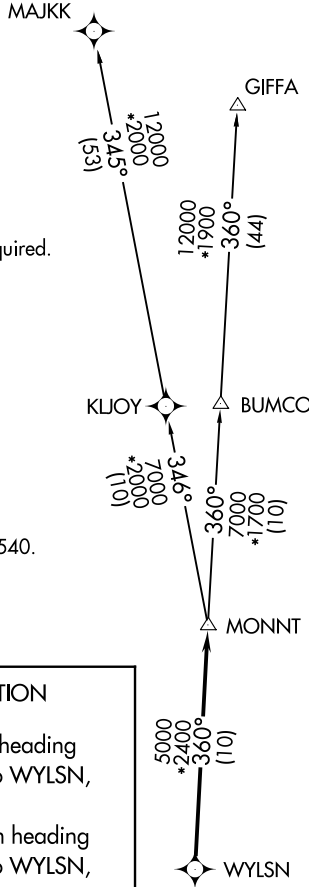
TAKEOFF RUNWAY 12: Climb on heading 121° to 540 for RADAR vectors to WYLSN, thence. . . .

TAKEOFF RUNWAY 23: Climb on heading 226° to 540 for RADAR vectors to WYLSN, thence. . . .

TAKEOFF RUNWAY 30: Climb on heading 301° to 540 for RADAR vectors to WYLSN, thence. . . .

. . . .on track 360° to MONNT, then on (transition). Maintain ATC assigned altitude. Expect filed altitude 10 minutes after departure.

GIFFA TRANSITION (WYLSN8.GIFFA)
MAJJK TRANSITION (WYLSN8.MAJJK)



NOTE: Chart not to scale.

WYLSN EIGHT DEPARTURE (RNAV)

SC-5, 11 JUN 2026 to 09 JUL 2026

SC-5, 11 JUN 2026 to 09 JUL 2026